



Customer Service and Recycling Guide

WARRENTON 2024

Contact Us!

Recology Western Oregon
2320 SE 12th Place, Warrenton, OR 97146

Customer Service 503.861.0578
Monday to Friday: 8 AM - 4 PM
Pay by Phone 971.312.0178
Toll Free 866.908.1183

 @RecologyWesternOregon

RWOinfo@Recology.com
Recology.com/WesternOregon

Collection Services



Recology provides residential curbside collection of recyclable materials through a contract with the City of Warrenton. Please direct questions about recycling services to Recology at 503.861.0578, and questions about **in-City** garbage service to the City of Warrenton at 503.861.2233.

Collection Set Out Time

For curbside service, set your cart out by **7 AM on your collection day (or the night before)**. Your actual service time may vary from week to week. You must bring your cart back in by the end of the day on your collection day. This includes sidewalks, driveways, and roadside locations.

Weight Limits

90-gallon cart 150 lbs

Curbside Placement

Please place your carts within 4ft of the curb or road's edge and 4ft from other carts and obstacles, such as cars, trees, basketball hoops, and mailboxes.

Missed Collection

If Recology missed collection of your recycling cart, call 503.861.0578 and they will take care of it as soon as possible.

What's My Recycling Collection Schedule?

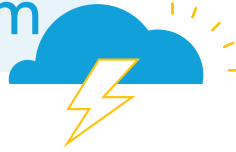
The recycling service calendar can be found in this guide.

Holiday Service

On most holidays, Recology operates as usual. Recology does not collect on Thanksgiving and Christmas day. During those times, service is delayed by one day for the remainder of the week.

For example, during Thanksgiving week, Thursday customers will be collected on Friday, and Friday customers will be collected on Saturday. In 2024, Christmas falls on Wednesday, so service will be delayed by one day for all residential customers for the rest of the week (Wednesday customers on Thursday, Thursday customers on Friday, etc.).

Preparing for a Storm



Be Prepared for All Types of Weather

1. Recyclables should be placed loose in your cart, but can be secured inside larger boxes or paper bags.
2. Do not overload your cart. If the lid is partially open, it will blow open in strong winds.
3. Do not put your cart out overnight if the forecast calls for windy and/or stormy weather. **However, carts do need to be out by 7 AM on collection day and removed from the street the same day.**

Secure Your Lid

Place a rock or another large object on top of the cart. **Please NO bungee cords, serious injury can occur.**

Wind Latch

Warrenton customers have wind latches included with their service. All carts have numbers assigned to specific addresses. Please make a note of your cart number.

City Clean-Up

Residents of the City of Warrenton with in-city garbage service will receive vouchers by mail that permit them to deliver up to 800 pounds of garbage to the Astoria Transfer Station at no charge.

WHERE

Astoria Transfer Station
1790 Williamsport Road, Astoria OR

ADDITIONAL DETAILS

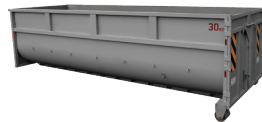
Additional fees apply for tires, appliances, refrigerators, and freezers (must be empty).

No hazardous waste, medical waste, or business waste accepted.

Residents must bring in a valid voucher, a current City of Warrenton utility bill showing billing for in-city garbage service, and photo ID.

Business Services

Recology offers waste audits and other services at no charge to commercial customers, including help with enclosure design, container size, collection frequency, and finding the recycling services that work best for you.



Temporary Boxes

The City of Warrenton offers 1.5, 2, and 3 cubic yard dumpsters for temporary use to dispose of garbage. The City does not accept hazardous materials and the lids must be closed for pick up.

We offer 3, 10, 20, and 30 cubic yard boxes. You will need an asbestos survey for construction or demolition on all structures built prior to 2004, before a box can be delivered to you. Call for more information and proper disposal options.



Reduce, Reuse and Recycle Right!

Why Recycle?

1. Saves water, energy, and other natural resources like trees, minerals, natural gas, and oil.
2. Reduces the amount of waste sent to landfills.
3. Prevents pollution by reducing the need to collect new raw materials.
4. Helps create jobs in recycling and manufacturing.

Waste Reduction and Reuse are even better than Recycling!

When you choose to reduce and reuse, less material, energy, and natural resources are used in the product's lifecycle. You also avoid the emissions from the extraction, processing and transport of new goods. With the power of Reuse, Reduce, and Repair, the impacts for our environment are out of this world!



OUR TOP 10 REDUCTION TIPS

1. Carry a reusable water bottle and refill it often!
2. Take your own mug to the coffee shop.
3. Carry canvas bags when grocery shopping.
4. Buy loose fruits and vegetables.
5. Choose reusable containers to store food and for packing lunches.
6. Refuse single-use plastics when possible.
7. Buy in bulk to eliminate packaging.
8. Shop at stores that re-sell clothing, furniture, appliances, and tools.
9. Use cloth napkins instead of paper ones.
10. Try to repair broken items before replacing them.

Home Composting

Composting your yard trimmings and kitchen scraps is a great way to help your plants and reduce the amount of waste you generate.



START A HOME COMPOSTING SYSTEM!

1. Build or buy a compost bin, or just make a pile.
2. Mix two parts greens (grass, leaves, and flowers) to one part browns (dry leaves, sticks, and twigs)
3. Some kitchen scraps are acceptable (vegetable and fruit peels, eggshells, coffee grounds). No meat or dairy products—these can attract rodents and flies and cause bad odors.
4. Turn and water regularly; keep your pile moist (like a damp sponge), and move the material around using a pitchfork or shovel.

WHY USE COMPOST?

Compost increases water retention, decreases the need for chemical fertilizers and pesticides, and helps keep a useful resource from going to waste!

Yard Debris Recycling

All residents with in-City garbage service can bring their clean yard trimmings to the Astoria Transfer Station at no charge. The City is billed for this material. Customers must have a valid yard debris cling on their windshield. Clings are mailed once a year.

All non-residential yard debris must be paid by the customer and is charged by the cubic yard.

RECYCLE

FOLLOW 3 SIMPLE RULES:



**EMPTY,
CLEAN,
AND DRY!**

- Empty any residual food or liquid.
- Clean the product by quickly rinsing or scraping off debris.
- Shake the container to remove moisture before tossing in your recycling cart.
- Do not use plastic bags; paper bags or boxes are OK.
- No items smaller than a tennis ball.
- Remove all lids.



Place mixed recycling loose in the **red-lid recycling cart.**

PAPER AND CARDBOARD



PLASTIC



METAL



GARBAGE



Remember to place your disposable coffee pods in the garbage



DEPOT

Recycling Depot

Astoria Transfer Station
1790 Williamsport Road
Monday–Saturday, 8 AM – 5 PM



- Electronics: Computers, monitors, laptops, etc.
- Glass Bottles and Jars
No glass dishware or drinking glasses
- Yard Waste: Grass, leaves, branches, and flowers
No dirt, sod or stumps
- Motor Oil: Place oil in a see through plastic jug with a tight fitting lid

TOP CONTAMINANTS

- Glass bottles can be brought to a local depot.
- Electronics can be dropped off at the Astoria Transfer Station.
- Plastic bags can be taken to some local grocery stores.
- Plastic clamshells, takeout containers, coffee pods, and diapers go in the garbage.

Not sure about a certain material?
Visit **Recology.com** to learn more!

2024 Recycling Collection Calendar



2024 Recycle Collection Calendar

RWOinfo@Recology.com
 Recology.com/WesternOregon

Coast: 503.861.0578
 Toll-Free: 866.908.1183

JANUARY

S	M	T	W	Th	F	S
	1	2	3	4	5	6
7	8	9	10	11	12	13
14	15	16	17	18	19	20
21	22	23	24	25	26	27
28	29	30	31			

FEBRUARY

S	M	T	W	Th	F	S
				1	2	3
4	5	6	7	8	9	10
11	12	13	14	15	16	17
18	19	20	21	22	23	24
25	26	27	28	29		

MARCH

S	M	T	W	Th	F	S
					1	2
3	4	5	6	7	8	9
10	11	12	13	14	15	16
17	18	19	20	21	22	23
24	25	26	27	28	29	30
31						

APRIL

S	M	T	W	Th	F	S
	1	2	3	4	5	6
7	8	9	10	11	12	13
14	15	16	17	18	19	20
21	22	23	24	25	26	27
28	29	30				

MAY

S	M	T	W	Th	F	S
			1	2	3	4
5	6	7	8	9	10	11
12	13	14	15	16	17	18
19	20	21	22	23	24	25
26	27	28	29	30	31	

JUNE

S	M	T	W	Th	F	S
						1
2	3	4	5	6	7	8
9	10	11	12	13	14	15
16	17	18	19	20	21	22
23	24	25	26	27	28	29
30						

JULY

S	M	T	W	Th	F	S
	1	2	3	4	5	6
7	8	9	10	11	12	13
14	15	16	17	18	19	20
21	22	23	24	25	26	27
28	29	30	31			

AUGUST

S	M	T	W	Th	F	S
				1	2	3
4	5	6	7	8	9	10
11	12	13	14	15	16	17
18	19	20	21	22	23	24
25	26	27	28	29	30	31

SEPTEMBER

S	M	T	W	Th	F	S
1	2	3	4	5	6	7
8	9	10	11	12	13	14
15	16	17	18	19	20	21
22	23	24	25	26	27	28
29	30					

OCTOBER

S	M	T	W	Th	F	S
		1	2	3	4	5
6	7	8	9	10	11	12
13	14	15	16	17	18	19
20	21	22	23	24	25	26
27	28	29	30	31		

NOVEMBER

S	M	T	W	Th	F	S
					1	2
3	4	5	6	7	8	9
10	11	12	13	14	15	16
17	18	19	20	21	22	23
24	25	26	27	28	29	30

DECEMBER

S	M	T	W	Th	F	S
1	2	3	4	5	6	7
8	9	10	11	12	13	14
15	16	17	18	19	20	21
22	23	24	25	26	27	28
29	30	31				

Commingled Recycling and Glass (In separate carts)

Holiday Collection
 Recology does not collect on Thanksgiving or Christmas Day. Collection will occur one day late after the holiday.



Household Hazardous Waste

Cleaning products, paints, and other chemicals can be dangerous if not properly disposed.

CLATSOP COUNTY'S HHW FACILITY

1780 Williamsport Road, Astoria, OR
Next to the Astoria Transfer Station



Contact Clatsop County to learn more. Call 503.325.9302, visit their website at co.Clatsop.or.us/PublicHealth, or email Health@co.clatsop.or.us.

E-Waste

Oregon E-Cycles is a free recycling program for computers, TVs, and monitors. The program is funded by manufacturers, with oversight from Oregon DEQ. Drop off items at the Astoria Transfer Station.



For large quantities, call ahead to make an appointment. TVs, computers, monitors, and laptops are prohibited from the landfill. Please do not place them in the garbage.

Medical Waste

Medical waste and sharps (e.g., needles, syringes) cannot be thrown out with the regular garbage. Recology offers safe, efficient disposal using approved containers—contact us for more information and pricing.



Recycling Depots

ASTORIA TRANSFER STATION

1790 Williamsport Road, Astoria
Summer Hours: 8:00 AM – 5:00 PM
Winter Hours: 8:00 AM – 4:00 PM

- ✓ **Accepted at the Scalehouse:** Garbage, yard debris, wood, tires, appliances, electronics, and car batteries. *Fees apply for most items.*
- ✓ **Accepted at the Self-Service Recycling Depot:** Glass bottles and jars, cardboard, paper, tin and aluminum cans, motor oil, and rigid plastic bottles and tubs. *No fees apply.*

WARRENTON DEPOT

The Corner of SW 1st Street. and SW Main Court
Alleyway behind 119 S. Main Avenue, Warrenton

- ✓ **Accepted:** Cardboard, glass bottles, and jars only

Paint Recycling



All paint sold in Oregon includes a surcharge to fund a collection and recycling program. Visit PaintCare.org for details. You can drop off latex and oil-based paints at one of these locations:

CITY LUMBER CO.

2142 Commercial St.
Astoria, OR 97103
503.325.4511

SHERWIN-WILLIAMS

3527 Highway 101 N
Gearhart, OR 97138
503.738.6751



1850 NE Lafayette Avenue
McMinnville, OR 97128

WARRENTON 2024

Customer Service and Recycling Guide

Prevent Truck Fires!

Keep these items out
of your cart:

- 1. Hot Ashes and Fireworks**
Douse in water and let sit overnight
- 2. Pool and Shop Chemicals**
Deliver to Household Hazardous Waste event
- 3. Lithium Batteries**
Deliver to Household Hazardous Waste event

