

# ENVIRONMENTAL PROGRAMS

## TAKE ADVANTAGE OF THESE GREAT OPPORTUNITIES



### ORDER FREE KITCHEN PAILS FOR TENANTS TO COLLECT COMPOST

If your multifamily complex subscribes to the composting program, Recology provides each tenant with a 2-gallon kitchen pail for in-home use. Kitchen pails are a handy and convenient way to keep the kitchen neat and clean while collecting food scraps and other compostable materials including paper towels, napkins and cups. When the pail is filled, you simply toss it into the green compost cart or bin on the property.

Contact 650-595-3900 or visit [recology.com](http://recology.com) to order the kitchen pails. Visit [rethinkcompost.org](http://rethinkcompost.org) for helpful composting tips and information.

### ON-CALL BULKY ITEM COLLECTION SERVICE

Twice a year, Recology offers a free scheduled pickup service of large and bulky items from Feb. 1 to Dec. 31. Residents may set out:

- Two cubic yards of bagged/boxed solid waste
- One large appliance (such as a washing machine, dryer, refrigerator or freezer)
- One bulky item (such as a mattress, couch or tires)
- Electronic waste (such as a TV, computer or computer monitor)

No liquids, dirt, rock, concrete, asphalt, hazardous waste or items that exceed 5 feet in length.

Bulky item collection service must be coordinated by Property Manager. Contact 650-595-3900 or visit [recology.com](http://recology.com) to schedule an appointment.

## Creating an environmentally sound community

### UPCOMING ELECTRONIC WASTE COLLECTION EVENT

Saturday, Aug. 19

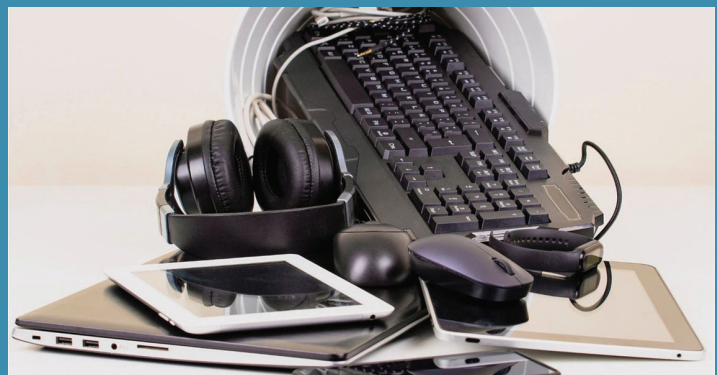
9 a.m. – noon

City Corporation Yard

333 Burgess Ave.

RethinkWaste and Recology San Mateo County are teaming up with the City of Menlo Park to encourage residents to properly recycle old electronics. Accepted items include TVs, computers, printers, monitors, cables/cords, cell phones, MP3 players, DVD players, laptops and more (working or not).

Items that will not be accepted include household appliances like fans, floor heaters, smoke detectors, vacuum cleaners, cooktops, dishwashers, microwaves, ovens, stoves, refrigerators, freezers or household hazardous waste.



Proof of residency may be required. The event will only be available until the end time, until the trucks are full, or while supplies last.

For more information, please email [jpchen@menlopark.gov](mailto:jpchen@menlopark.gov) or visit [menlopark.gov/ewaste](http://menlopark.gov/ewaste).

# ENVIRONMENTAL PROGRAMS

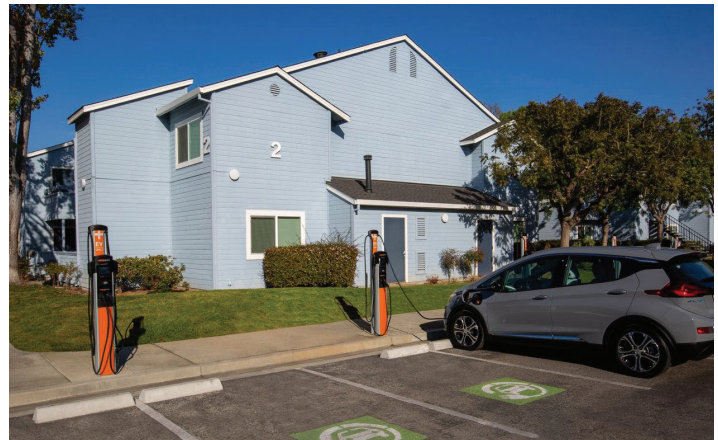
## TAKE ADVANTAGE OF THESE GREAT OPPORTUNITIES

### REBATE FUNDS TO INSTALL ELECTRIC VEHICLE CHARGING STATIONS

Did you know on-site electric vehicle (EV) charging at multi-unit properties allows residents to charge overnight, a key factor in making the switch from a fossil fuel car to electric. Increased access to overnight charging is not only good for our community, it can also attract and retain tenants.

Right now, there is limited time funding available! Peninsula Clean Energy (PCE) has launched a \$28M program to support the installation of EV charging at multi-unit properties and workplaces. In addition to rebates which can reduce the cost of installation, PCE's EV Ready program also offers free technical assistance and preferred pricing for EV charging stations.

Free technical assistance includes site visit, load analysis, site layout, contractor bids, permit and installation process support, and rebate assistance. The resulting analysis produces three engineering-based EV charging installation solutions for the site: one to install the number of charging ports requested by the program applicant, one to



economically maximize the total charging ports at the site, and one to "future proof" by installing as many charging ports as possible at the site.

But isn't driving an EV just as bad for the environment as fossil fuel cars? Not in Menlo Park. The city's primary electric energy provider, PCE, provides 100% greenhouse gas free electricity. To learn more visit [peninsulacleanenergy.com/power-mix](http://peninsulacleanenergy.com/power-mix).

The following rebates are available for qualified sites:

PROPERTY TYPE	CHARGING PORT TYPE	PCE INCENTIVE	APPLICABLE CAP
Existing multi-unit dwelling (affordable housing site)	Level 1 (simple 120V household plug)	\$2,000 (\$2,500)	Up to 100% of total project cost, no property maximum
Existing multi-unit dwelling	Level 2 electric vehicle supply equipment (like charging stations)	\$4,500	Up to 75% of total project cost, \$36,000 per property maximum
Existing multi-unit dwelling	Main panel upgrade (increases electrical capacity)	\$4,000	Up to \$4,000
Existing workplace	Level 1 (simple 120V household plug)	\$2,000	Up to 100% of total project cost, no property maximum
Existing workplace	Level 2 electric vehicle supply equipment (like charging stations)	\$4,000	Up to \$80,000 per property maximum

Additional rebates for new construction exceeding local building code requirements are also available. To learn more about rebates and technical assistance, qualifications and how to apply, please visit [PenCleanEnergy.com/EV-Ready](http://PenCleanEnergy.com/EV-Ready), call 650-449-8561 or email [PCE-EVReady@CLEAResult.com](mailto:PCE-EVReady@CLEAResult.com).

**City of Menlo Park**  
 701 Laurel St.  
 Menlo Park, CA 94025  
 650-330-6720  
[menlopark.gov/citymanager](http://menlopark.gov/citymanager)

### GARBAGE/RECYCLING SERVICE QUESTIONS

Recology San Mateo County

- Visit [Recology.com](http://Recology.com)
- Call 650-595-3900