

To-do

KEEP
the
SEA
PLASTIC FREE

WASTE LESS, RECYCLE MORE

- PLACE RECYCLABLES IN THE BLUE BIN
- BUY SECONDHAND
- AVOID DISPOSABLE PLASTIC FOODWARE
- BRING YOUR OWN BAG & CUP
- COMPOST FOOD WASTE IN GREEN BIN
- CHOOSE PRODUCTS WITH MINIMAL PACKAGING
- PROPERLY DISPOSE OF ELECTRONIC WASTE

THE
SOLUTION
IS
LESS
POLLUTION

going →
ZERO
WASTE

REDUCE
REUSE
RECYCLE

Recycle.
Compost.
Go Electric.
Save Water.
Say No To Plastic.

take action.

THE FUTURE IS IN OUR HANDS.

 @burlingame_sustainability

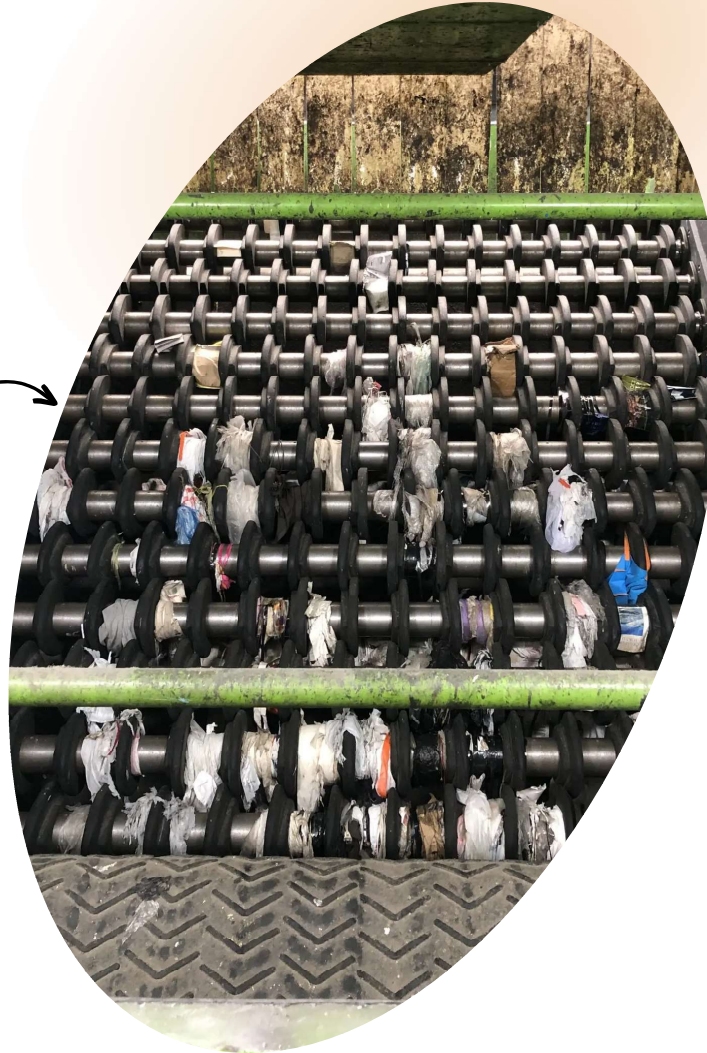
Friendly Reminders

Plastic bags go in the garbage 🗑️

WHY?

- 1 Plastic bags jam the machines at the RethinkWaste recycling facility
- 2 Facility workers have to go in and manually cut the plastic bags out
- 3 Jams slow down our process, as we receive 540,000 pounds of recyclable material every day

Tip: Reuse plastic bags when you can! If not, some retail stores take back plastic bags. Find more information at RethinkWaste.org/PlasticBags



Jammed machine at the RethinkWaste facility

Keep the lids of your carts and bins **CLOSED** so the insides don't get wet

Once paper goods get wet, it lowers its quality and lessens the chance of getting recycled

