



**REDUCE, REUSE, RECYCLE, & ROT
= RECOLOGIZE!**



Recology Sonoma Marin

- Started operations December 23, 2017
- Employee owned company - 460 local employees
- Part of Teamsters Union 665





Service Area

- Recycle, compost, garbage, C&D, street sweeping, and recycle processing services
- 155,000 customers
 - 145,500 residential
 - 9,500 commercial



Mission

- Reduce tons sent to landfill
- Recover resources

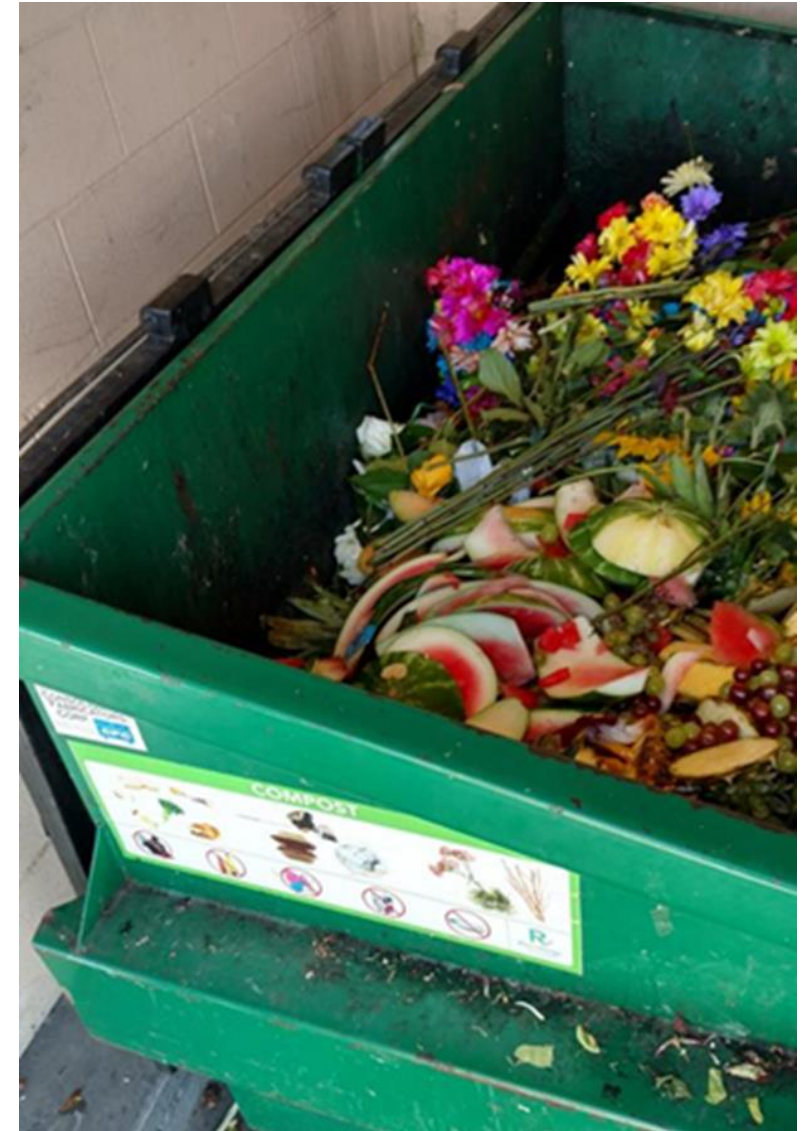


Get Pumped!



CA Compost & Recycle Laws

- Mandatory Compost (AB1826) & Mandatory Recycle (AB341)
 - All commercial accounts with 2+ cubic yards solid waste per week
- SB1383, effective 2022
 - ALL accounts will need to have compost programs in place



Compost

COMPOST | ABONO



Contamination



R
Recology
Sonoma Marin
WASTE ZERO

These materials DO NOT belong in the Compost bin.

 Plastic	 Styrofoam	 Glass
 Gloves	 Aluminum trays	 Plastic utensils
 Aseptic containers	 Black bags	 Shrink wrap



Compost
sequesters
carbon
from the
atmosphere.

Compost Process

The Grinder



Windrows, 60 - 90
Day Process



Turning/ Watering
Windrows



Screening



Final Compost Product



Recycling

RECYCLE | RECICLE



Save Natural Resources

Recycling 1 ton of paper saves:

- 17 **trees**
- 2 barrels of **oil**
- 7,000 gallons of **water**
- 4,100 kWh of **electricity** (enough to power the average American home for 5 months)
- 3 cubic yards of **landfill space**





Recyclables are sorted, baled, and made into new items.

Sorting Recyclables



**DON'T JUST RECYCLE,
RECYCLE RIGHT!**



Plastics? Containers Only



No Hazardous Waste



Empty & Dry



No Plastic Bags



**When in doubt,
Find out!**

[Recology.com/RSMWhatBin](https://www.Recology.com/RSMWhatBin)



800.243.0291

RecologySonomaMarin@Recology.com

[Facebook.com/RecologySonomaMarin](https://www.facebook.com/RecologySonomaMarin)

Contamination

- Plastic bags, hoses, etc. get caught in the spinning discs of the sorting equipment
- Liquids & food waste contaminate paper & cardboard



Recology.com/RSMWhatBin

SEARCH

CONTACT FAQ CAREERS PAY MY BILL

OUR VISION CUSTOMER SERVICE LOCATION IN MY COMMUNITY **HELPFUL RESOURCES** NEARBY LOCATIONS MY RECOLOGY RECOLOGY-SAN-FRANCISCO

English Share

WhatBin

Use the search bar to type in the item you want to dispose of, and we'll tell you where it goes.

napkin SEARCH

COMPOST RECYCLING LANDFILL OTHER

PLEASE PUT PAPER NAPKINS IN THE COMPOST

So, What is Garbage?

GARBAGE | BASURA



Hazardous Waste

- Do not dispose of in Garbage, Recycle, or Compost
- Learn more at ZeroWasteSonoma.gov, NovatoSan.com, MarinHHW.com



Trashed: The Global Waste Problem



Reduce & Reuse



Questions?



Facebook.com/
RecologySonomaMarin

Recology.com/SonomaMarin

RSMWasteZero@Recology.com