



## RESIDENTIAL SERVICE GUIDE

All of us at Recology wish to welcome you as a new customer! Our WASTE ZERO mission represents a fundamental shift from traditional waste management to resource recovery. By finding the best and highest use of all materials we collect, the communities we serve are able to conserve resources, reduce potent greenhouse gas emissions, and divert material away from the landfill.

### YOUR COMPOST SERVICE

Studies have shown that 30% of the material currently disposed of in California landfills is compostable. Placing your compostable materials in your compost bin instead of your garbage bin prevents them from producing methane gas in landfills, and will ensure they live on to help plants grow and store carbon from the atmosphere in the soil. **All of your food scraps (including produce, meat, bones, bread, and dairy), coffee filters, paper towels, shredded paper, and even greasy pizza boxes can go in your green compost bin along with your yard trimmings.**

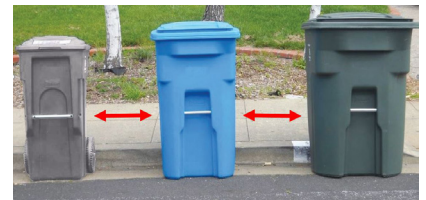


### YOUR RECYCLE SERVICE

Plastic recycling can seem complicated. A good general rule is that nearly all **clean and dry** plastic containers are recyclable. Container lids should be left on. Other plastics, such as plastic bags, Styrofoam, straws, and utensils are not recyclable. **Please don't enclose your recyclables in plastic bags.** They are not opened at our facility and they can damage our equipment. **Find out more about what can go in your recycle bin at [Recology.com/RSMWhatBin](http://Recology.com/RSMWhatBin).**

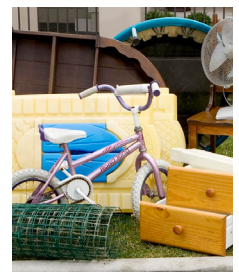
### PROPER CART SET-OUT

Proper cart placement is important. Lids should be closed, and carts should be placed **3 feet apart** the night before your service day. Ensure there is 12 feet of clearance above each cart - avoid trees and basketball hoops.



### ADDITIONAL SERVICES

Find out about additional services, such as bulky item pick-ups, hazardous waste, and more by visiting [Recology.com/SonomaMarin](http://Recology.com/SonomaMarin). Just look for your service area under the "Location" tab.



\*Para obtener más información en español, visite nuestro sitio web en [Recology.com/RSMResources](http://Recology.com/RSMResources).

## RECYCLE



**Unsouiled Cardboard,**  
Paper, Newspaper,  
Magazines, Mail,  
Cartons

**Clean Glass**  
Bottles  
& Jars with  
Lids on

**Clean Metal**  
Cans,  
Aluminum,  
Small Scrap  
Metal

**Clean Plastic**  
Containers  
with Lids on

- NO...**
- Batteries, cell phones & electronics
  - Ceramics, mirrors, windows & glassware
  - Clothing hangers (all types)
  - Comdiment packets
  - Construction & demolition material
  - Fluorescent lights, tubes & CFLs
  - Food & food wrappers
  - Garden hoses
  - Liquids
  - Napkins & paper towels
  - Paper coffee cups & plates
  - Pizza boxes
  - Plastic bags & film plastics
  - Plastic cutlery & straws
  - Styrofoam
  - Toys
  - Wires, chains & cables
  - Wood

## COMPOST



**Food Scraps (including**  
Meat, Shells, Bones,  
Fruit, Vegetables, Bread  
& Dairy)

**Plant Trimmings &  
Untreated Wood**  
no larger than  
4 ft. x 4 in.

**Food Soiled Paper  
& Cardboard,  
Wooden Utensils**

- NO...**
- Aluminum foil, trays, metal
  - Animal waste
  - BBQ ashes
  - Cartons
  - Comdiment packets
  - Cooking oil & grease
  - Diapers
  - Glass
  - Gloves
  - Liquids
  - Paper coffee cups
  - Palm fronds, poison oak, cactus, bamboo
  - Plastics (including "compostable")
  - Plywood, treated & painted wood
  - Styrofoam
  - Waxed cardboard

## GARBAGE



- NO...**
- Batteries & cell phones\*
  - Concrete, stones & bricks
  - Cooking oil & grease\*
  - Fluorescent lights, tubes & CFLs\*
  - Hazardous Waste\*
  - Liquids
  - Motor oil & filters\*
  - Prescription medicine\*
  - Sharps, needles & lancets\*
  - TVs, computers & other electronics\*
- \* These materials are considered hazardous waste, and will need to be disposed of by a specialized vendor or facility. Learn more by visiting [ZeroWasteSonoma.gov](http://ZeroWasteSonoma.gov), [MarinHHW.com](http://MarinHHW.com), or [NevadaSan.com](http://NevadaSan.com)



**Recology**  
Sonoma Marin  
WASTE ZERO

800.243.0291 - [RecologySonomaMarin@recology.com](http://RecologySonomaMarin@recology.com)

[Recology.com/SonomaMarin](http://Recology.com/SonomaMarin)