

2019 Holiday Schedule

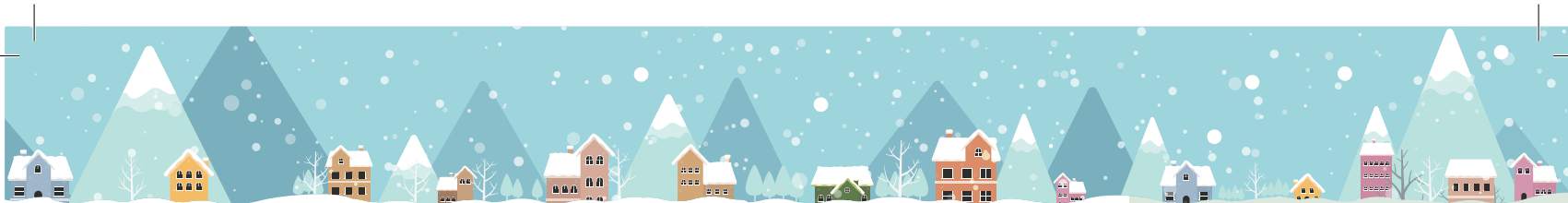
DECEMBER MONDAY 23 Regular Service	DECEMBER TUESDAY 24 Regular Service	DECEMBER WEDNESDAY 25 No Service	DECEMBER THURSDAY 26 Service for Wednesday Customers	DECEMBER FRIDAY 27 Service for Thursday Customers	DECEMBER SATURDAY 28 Service for Friday Customers
DECEMBER MONDAY 30	DECEMBER TUESDAY 31	JANUARY WEDNESDAY 1	JANUARY THURSDAY 2	JANUARY FRIDAY 3	JANUARY SATURDAY 4

There will be **NO** Recycle, Compost and Garbage collection services Christmas Day on **Wednesday, December 25, 2019** and New Years Day on **Wednesday, January 1, 2020**. If your regular collection day falls on or after the holiday, your service will be **DELAYED BY ONE DAY**. Regular collection service schedule will resume the week of January 6, 2020.

INTERESTED IN MORE INFORMATION?

650-595-3900
Recology.com
carts@recology.com





Tree Cycling

Recology San Mateo County will collect holiday trees curbside for composting between December 26th and January 31st. Please note that trees may be collected by a vehicle other than your regular compost collection vehicle.

For proper **Tree Cycling** please follow these easy steps:

- Remove all decorations and tree stands (flocked trees are accepted)
- Place tree next to your green Compost Cart (or place inside with trunk sticking out)
- Trees larger than 8ft will need to be cut in half in order to be collected

After January 31st, please cut the tree to fit inside the Compost Cart.



Apartment Managers/Owners

Contact us to arrange for collection of holiday trees for your property. Trees can be collected in piles or in a drop box for no additional charge.

Recology.com
carts@recology.com
(650)595-3900

NOM88i

Tips to Green Your Season

- Get creative by using newspaper, scarves, or even reusable bags to create unique AND green wrappings for gifts.
- Shopping locally not only supports small businesses and boosts our local economy, less or shorter trips in your car will reduce your carbon footprint. This might even put you on Santa's Nice List!.