

The Recology[®] **RESOURCE**

So, You Think You Can Recycle? See Page 3!

WHAT'S INSIDE: Fall Updates p2 / Where Does It Go?* p3 /
Holiday Information* p4 / Hazardous Waste* p5 / Waste Zero Services p6
(*English & Spanish)

THE BARLOW



SEBASTOPOL | FALL 2018 EDITION





A Recology sort line worker sorts a load of single-stream recycling

FALL UPDATES

As we approach the end of our first year in Sonoma and Marin counties, we have to take a moment to say “Thank You!” for all of the local support we have received. Have you seen us hosting a table at a community event? We have been to over 60 of them so far this year. We love meeting our customers, answering questions, and providing educational materials. We are truly inspired by how passionate our customers are about recycling AND composting – and doing it correctly too!

Speaking of compost service, we are proud to say that we have added or increased compost service at over 200 commercial accounts this year. This includes schools, restaurants, markets, hardware stores, florists, hospitals, and apartment complexes. That is a lot of material that was once going to the

landfill and is now being turned into nutrient-rich compost instead.

That being said, this year has not been without challenges. China continues to enforce its “National Sword” policy. This places strict regulations on the amount of acceptable contamination allowed in the bales of recyclable materials they import. While some cities in the US have abandoned recycling because of this, we are working harder than ever to make sure our materials are clean and dry so they can continue to be recycled. This means it is imperative to keep contaminants such as food waste and plastic bags out of your recycling bins and carts. One of the worst contaminants we receive are hypodermic needles. We have seen an increase of these mixed with recyclables which is extremely dangerous to our sort-line workers. You can find

information on what to do with sharps on page 5 of this newsletter.

Albert Einstein once said “In the middle of difficulty lies opportunity”. **While recycling is on the forefront of the collective consciousness, we see the challenges we are experiencing as an opportunity to encourage and educate our customers as much as possible.** Please reach out if you have any questions, follow us on Facebook, and help us spread the good word of “Reduce, Reuse, Recycle, and Recologize!”

CONTACT US

RecologySonomaMarin@Recology.com








[Recology.com/SonomaMarin](https://www.Recology.com/SonomaMarin)

800.243.0291



[Facebook.com/RecologySonomaMarin](https://www.facebook.com/RecologySonomaMarin)

WHERE DOES IT GO?

<u>WHAT?</u>	<u>WHERE?</u>	<u>WHY?</u>
 <p>Plastic Cups <i>Vaso de Plástico</i></p>	<p>Recycle <i>Reciclar</i></p>	<p>China and Southeast Asia are still accepting this material for recycling as long as it is empty & dry.</p>
 <p>"Compostable" Plastics <i>Plástico Compostable</i></p>	<p>Garbage <i>Basura</i></p>	<p>Does not break down into compost at the facilities where we take material. Cannot be recycled.</p>
 <p>Plastic Bags & Film <i>Bolsas de plástico</i></p>	<p>Garbage <i>Basura</i></p>	<p>Not recyclable in a single-stream system. Gets tangled in sorting equipment.</p>
 <p>Plastic Utensils & Straws <i>Utensilios y pajitas de plástico</i></p>	<p>Garbage <i>Basura</i></p>	<p>Not recyclable in a single-stream system. Too small to be sorted. Includes compostable plastics.</p>
 <p>Clear Plastic Clamshells <i>Cajas Para Comida Para Llevar</i></p>	<p>Recycle <i>Reciclar</i></p>	<p>China and Southeast Asia are still accepting this material for recycling as long as it is empty & dry.</p>
 <p>Shredded Paper <i>Papel en Trizas</i></p>	<p>Compost <i>Abono</i></p>	<p>Breaks down into compost. Contain in paper bags to prevent blowing away. Too small for recycling.</p>
 <p>Boxes with Styrofoam <i>Cajas Con Poliestireno</i></p>	<p>Recycle & Garbage <i>Reciclar y Basura</i></p>	<p>Styrofoam & film plastic are not recyclable. Clean & dry cardboard is recyclable. Must be separated.</p>
 <p>Waxed Cardboard <i>Carton Encerado</i></p>	<p>Garbage <i>Basura</i></p>	<p>In most cases "waxed" cardboard actually has a plastic coating. Therefore it cannot be recycled.</p>
 <p>Milk Cartons <i>Cartones de Leche</i></p>	<p>Recycle <i>Reciclar</i></p>	<p>Clean & dry milk cartons and aseptic containers such as soy milk and juice boxes are recyclable.</p>
 <p>Coffee Cups <i>Taza de Café</i></p>	<p>Garbage <i>Basura</i></p>	<p>Coffee cups have a plastic liner which prevents them from being recyclable or compostable.</p>
 <p>Food Scraps <i>Restos de Comida</i></p>	<p>Compost <i>Abono</i></p>	<p>ALL food scraps are compostable. This includes meat, bones, dairy as well as vegetative food scraps.</p>

HOLIDAY INFORMATION

HOLIDAY COLLECTION SCHEDULE

There will be no service on **Thanksgiving, November 22nd**. Customers with Thursday and Friday service will be serviced on Friday and Saturday. **Christmas and New Year's Day** fall on a Tuesday this year. Customers with Tuesday - Friday service will be serviced Wednesday - Saturday. You can always check your service schedule at www.recology.com/RSMschedules.

HOLIDAY TREE RECYCLING

City Corporation Yard Drop-off available from December 26th - January 9th:

Whole trees may be taken to the Sebastopol Youth Annex rear parking lot area at 425 Morris Street, daily from 8am-4pm. Flocked trees are NOT accepted.

Sonoma County Transfer Station Drop-off available from December 26th - January 16th:

All transfer stations will accept up to (2) unflocked trees at no cost.

Compost Carts:

Clean holiday trees may be cut to fit inside your compost cart at any time. Remove lights, tinsel, and ornaments. Flocked trees will not be accepted. The lid of your cart must be closed.

CAMBIO DE HORARIO DE LOS SIGUIENTES DÍAS FERIADOS

No habrá servicio de recolección de basura el Jueves 22 de Noviembre de 2018 (DÍA DE ACCIÓN DE GRACIAS). Clientes con servicio de recolección el Jueves tendrán servicio el Viernes. Clientes con servicio de recolección el Viernes tendrán servicio el Sábado. NO habrá servicio el Martes 25 de Diciembre de 2018 (NAVIDAD) y el Martes 1 de Enero de 2019 (AÑO NUEVO) Recolección de basura será de miércoles a sábado. Puede confirmar sus fechas de servicio en www.Recology.com/RSMschedules.

RECICLAJE DE ÁRBOLES DE VACACIONES

Entrega en City Corporation Yard está disponible del 26 de diciembre al 9 de enero:

Se pueden llevar árboles enteros al área de estacionamiento trasero del anexo juvenil de Sebastopol en el 425 Morris Street, todos los días de 8am a 4pm.

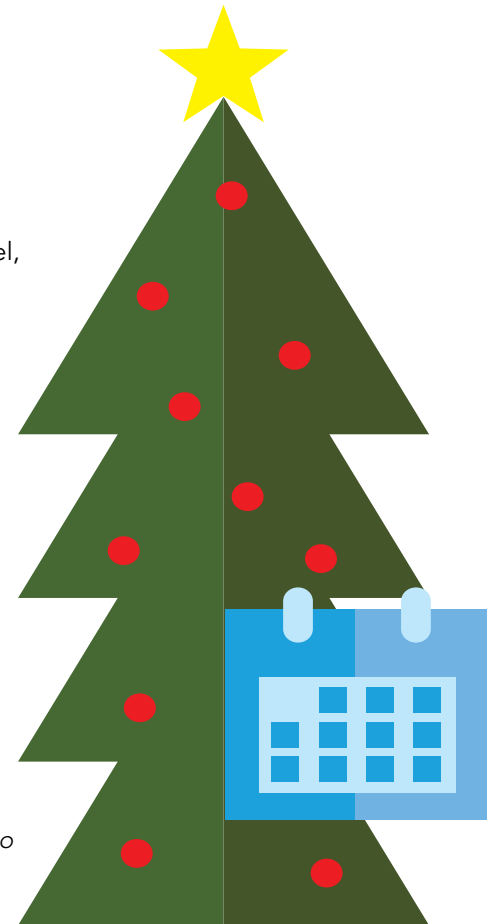
Entrega de Sonoma County Transfer Station hasta el 16 de enero:

Todas las estaciones aceptarán hasta 2 árboles navideños enteros gratuitamente.

NO SE ACEPTAN árboles con nieve artificial.

Bote de Abono:

Se pueden cortar los árboles navideños limpios para que quepan dentro de su carrito de abono en cualquier momento. Quitar las luces, oropel, y adornos. NO SE ACEPTAN árboles con nieve artificial.



Tips For Reducing Holiday Waste

Gifts

- Give a consumable gift. Local honey, cookies or a home cooked meal will always be appreciated.
- Share a service you can provide. Offer car repair, yard work, or home improvement services.
- Make a donation in the recipient's name to a favorite charity.
- Shop for one-of-a-kind gifts at antique stores, estate sales, thrift stores or flea markets.

Gift-Wrap

- Give gifts in reusable tote bags or baskets.
- Design your own gift wrap by using paper bags and adding decorations such as drawings or stamped patterns.
- Wrap gifts in the comics section of the paper, old posters, or maps.
- Reuse your bows, ribbons, boxes, and gift bags.

HAZARDOUS WASTE



The Sonoma County Waste Management Agency has several options for residents to properly dispose of household hazardous waste.

The Household Toxics Facility

500 Mecham Rd, Petaluma
Thursday - Saturday, 7:30am-2:30pm
www.recyclenow.org/toxics/toxics.asp

Community Toxics Collection Events

Collection events are in different areas of Sonoma County every Tuesday from 4-8pm. Events are free to residents. To make an appointment, call 707.795.2025 or email toxicsdisposal@cleanharbors.com.

Toxics Rover Pickup Service

Your toxics can be picked up at your home. Appointments are available on Wednesdays for \$50 per pickup. To make an appointment, call 707.795.2025 or email toxicsdisposal@cleanharbors.com.

E-Waste is not accepted through the above programs. For information on E-Waste recycling please go to www.recyclenow.org/toxics/electronics.asp.

Instalación de productos y residuos tóxicos que se usan para la limpieza del hogar

500 Mecham Rd, Petaluma
Jueves - Sábado, 7:30am-2:30pm

Colección Community Toxics

Este evento se realiza en diferentes áreas de el condado de Sonoma todos los martes de 4-8pm. Éste servicio es disponible solo con cita previa. Para hacer una cita llame al 707.795.2025 o mande un correo electrónico a toxicsdisposal@cleanharbors.com

Para más información visite

www.Recyclenow.org/toxics/toxics.asp.

Servicio de recogida de vehículos todoterreno

Los desperdicios de productos tóxicos pueden ser recogidos en su residencia. Este servicio es disponible los Miércoles con cita previa. Llame para hacer una cita 707.795.2025 o mande un correo electrónico toxicsdisposal@cleanharbors.com. Para obtener más información visite www.recyclenow.org/toxics/toxics.asp.

Residuos Electrónicos no es aceptado a través de los programas anteriores. Para obtener información sobre el reciclaje de residuos electrónicos visite www.recyclenow.org/toxics/electronics.asp.

E-Waste
Residuos electrónicos



Motor Oil
Aceite de Motor



Sharps
Agujas



Batteries
Baterías



Household Toxics
Residuos Tóxicos



WASTE ZERO SERVICES

Compost and recycling services are free of charge for all commercial customers. Let our Waste Zero Team help your business, multi-family dwelling, or school divert materials away from the landfill.

WE OFFER (AT NO CHARGE):

- Technical assistance from Waste Zero Specialists
- Employee trainings & school presentations
- Educational tables at events
- Posters, labels, magnets, & window clings
- Indoor green & blue containers

To reach our Waste Zero Team, call **800.243.0291** or email RecologySonomaMarin@Recology.com.



We want to thank the following Sonoma County restaurants and markets who have successful compost programs:

Alvarado Street Bakery, Petaluma	Henny Penny Restaurant, Petaluma	Ramen Gaijin, Sebastopol
Amy's Drive Thru, Rohnert Park	Hooters, Rohnert Park	Ram's Gate Winery, Sonoma
Andy's Produce Market, Sebastopol	Hopmonk Tavern, Sebastopol	Red Bird Bakery, Santa Rosa
Applebee's, Rohnert Park	Ike's Place, Santa Rosa	Red Lobster, Rohnert Park
Aroma Roasters, Santa Rosa	In-N-Out Burger, Petaluma, Santa Rosa, Rohnert Park	Redwood Café, Cotati
Arrowood Winery, Glen Ellen	Jackson Family Wines, Santa Rosa	River Rock Casino, Geyserville
Bill's Farm Basket, Sebastopol	Juanita Market, Rohnert Park	Rugged Coast Brewing, Santa Rosa
Bird & The Bottle, Santa Rosa	Kendall Jackson, Fulton, Healdsburg, Santa Rosa	Russian River Brewing, Santa Rosa
Boxcar Fried Chicken & Biscuits, Sonoma	La Palapa Restaurant, Santa Rosa	Russian River Pub, Forestville
Ca'Bianca Restaurant, Santa Rosa	La Reyna Bakery, Santa Rosa	Russian River Vineyard, Forestville
Café Citti, Kenwood	Lagunitas Brewing Company, Petaluma	Safeway, Santa Rosa, Rohnert Park, Sebastopol
Casa Del Mole, Healdsburg	Lola's Market, Healdsburg, Santa Rosa, Petaluma	Sally Tomatoes, Rohnert Park
Cattlemens Restaurant, Petaluma	Lombardi's Gourmet Deli, Petaluma	Screamin' Mimi's, Sebastopol
Chandi Restaurant, Santa Rosa	Los Tres Chiles, Santa Rosa	Sesmic Brewing, Santa Rosa
Chilli's, Rohnert Park	Lucas Wharf, Boeoga Bay	Shari's Diner, Rohnert Park
City Garden Doughnuts & Coffee, Santa Rosa	Mack's Bar & Grill, Penngrove	Shelton's Natural Foods Market, Healdsburg
Coffee Bazaar, Guerneville	Marin-Sonoma Produce Co., Petaluma	Siduri Winery, Santa Rosa
Community Market, Santa Rosa, Sebastopol	Martha's Old Mexico, Sebastopol	Silver Oak Cellars, Healdsburg
Costco, Rohnert Park	Martin Ray Winery, Santa Rosa	Simi Winery Vineyards, Healdsburg
Costeaux French Bakery, Healdsburg, Santa Rosa	Mary's Pizza Shack, Santa Rosa, Petaluma, Rohnert Park	Singlethread Farm Restaurant, Healdsburg
Dhalia & Sage Community Market, Cloverdale	Matanzas Creek Winery, Santa Rosa	Smart & Final, Santa Rosa, Petaluma
Diavola Pizzeria, Geyserville	Matero's Cocina Latina, Healdsburg	Sonoma Raceway, Sonoma
D's Diner, Sebastopol	Mexico Lindo, Graton	St. Francis Winery, Santa Rosa
Duke's Spirited Cocktails, Healdsburg	Molsberry Market, Santa Rosa	Stark's Steakhouse, Santa Rosa
El Patio Mexican Food, Santa Rosa	Montgomery Village, Santa Rosa	Steele & Hops, Santa Rosa
El Tarasco, Sebastopol	Mountain Mike's Pizza, Rohnert Park, Santa Rosa	Stormy's Bloomfield Tavern, Petaluma
Espresso Café, Santa Rosa	Noodle Rice Etc., Guerneville	Super Latino Market, Santa Rosa
Fiesta Market, Sebastopol	Oakville Grocery, Healdsburg	Super Market Rancho Mendoza, Santa Rosa
Fishetarian Fish Market, Bodega Bay	Olive Garden, Rohnert Park	Taqueria El Paisa, Rohnert Park
Flying Goat Coffee, Healdsburg	Oliver's Market, Santa Rosa, Cotati	Taqueria El Sombrero, Healdsburg
Fork Roadhouse, Sebastopol	Outback Steakhouse, Rohnert Park	Taqueria Los Primos, Santa Rosa
Francis Ford Coppola Winery, Geyserville	Pacific Market, Santa Rosa	Taqueria Santa Rosa, Santa Rosa
Franco American Bakery, Santa Rosa	Panaderia El Palomo, Cloverdale	The Fig Café, Glen Ellen
Fulton Marketplace, Santa Rosa	Papa's Pizza Café, Cloverdale	Underwood Bar & Bistro, Graton
Fundamental Foods, Santa Rosa	Patisserie Angelica, Sebastopol	Union Hotel Restaurant, Occidental
Gallo Vineyards, Healdsburg	Paul Hobbs Winery, Sebastopol	Verite Winery, Healdsburg
Glen Ellen Village Market, Glen Ellen	Pearl Restaurant, Petaluma	Vinwood Cellard, Geyserville
Graton Resort & Casino, Rohnert Park	Peet's Coffee, Cotati	Virginia Dare Winery, Geyserville
Gravenstein Grill, Sebastopol	Pelican Plaza Grocery & Deli, Bodega Bay	Viva Mexico, Sebastopol
Gravenstein Station, Sebastopol	Penngrove Pub, Penngrove	Whole Foods Market, Petaluma, Sebastopol, Santa Rosa
Hartford Family Winery, Forestville	Pepe's Mexican Restaurant, Santa Rosa	Willow Wood Market, Graton
Healdsburg Bar & Grill, Healdsburg	Petaluma Market, Petaluma	Zini's Diner, Cloverdale
Healdsburg Shed, Healdsburg	Preferred Sonoma Caterers, Petaluma	