

The Recology[®] RESOURCE

So, You Think You Can Recycle? See Page 3!

WHAT'S INSIDE: Fall Updates p2 / Where Does It Go?* p3 /
Holiday Information* p4 / Hazardous Waste* p5 / Waste Zero Services p6
(*English & Spanish)

SANTA ROSA | FALL 2018 EDITION





A Recology sort line worker sorts a load of single-stream recycling

FALL UPDATES

As we approach the end of our first year in Sonoma and Marin counties, we have to take a moment to say “Thank You!” for all of the local support we have received. Have you seen us hosting a table at a community event? We have been to over 60 of them so far this year. We love meeting our customers, answering questions, and providing educational materials. We are truly inspired by how passionate our customers are about recycling AND composting – and doing it correctly too!

Speaking of compost service, we are proud to say that we have added or increased compost service at over 200 commercial accounts this year. This includes schools, restaurants, markets, hardware stores, florists, hospitals, and apartment complexes. That is a lot of material that was once going to the

landfill and is now being turned into nutrient-rich compost instead.

That being said, this year has not been without challenges. China continues to enforce its “National Sword” policy. This places strict regulations on the amount of acceptable contamination allowed in the bales of recyclable materials they import. While some cities in the US have abandoned recycling because of this, we are working harder than ever to make sure our materials are clean and dry so they can continue to be recycled. This means it is imperative to keep contaminants such as food waste and plastic bags out of your recycling bins and carts. One of the worst contaminants we receive are hypodermic needles. We have seen an increase of these mixed with recyclables which is extremely dangerous to our sort-line workers. You can find informa-

tion on what to do with sharps on page 5 of this newsletter.

Albert Einstein once said “In the middle of difficulty lies opportunity”. **While recycling is on the forefront of the collective consciousness, we see the challenges we are experiencing as an opportunity to encourage and educate our customers as much as possible.** Please reach out if you have any questions, follow us on Facebook, and help us spread the good word of “Reduce, Reuse, Recycle, and Recologize!”

CONTACT US

RecologySonomaMarin@Recology.com









Recology.com/SonomaMarin

800.243.0291



Facebook.com/RecologySonomaMarin

WHERE DOES IT GO?

| <u>WHAT?</u> | <u>WHERE?</u> | <u>WHY?</u> |
|---|--|---|
|  <p>Plastic Cups <i>Vaso de Plástico</i></p> | <p>Recycle <i>Reciclar</i></p> | <p>China and Southeast Asia are still accepting this material for recycling as long as it is empty & dry.</p> |
|  <p>"Compostable" Plastics <i>Plástico Compostable</i></p> | <p>Garbage <i>Basura</i></p> | <p>Does not break down into compost at the facilities where we take material. Cannot be recycled.</p> |
|  <p>Plastic Bags & Film <i>Bolsas de plástico</i></p> | <p>Garbage <i>Basura</i></p> | <p>Not recyclable in a single-stream system. Gets tangled in sorting equipment.</p> |
|  <p>Plastic Utensils & Straws <i>Utensilios y pajitas de plástico</i></p> | <p>Garbage <i>Basura</i></p> | <p>Not recyclable in a single-stream system. Too small to be sorted. Includes compostable plastics.</p> |
|  <p>Clear Plastic Clamshells <i>Cajas Para Comida Para Llevar</i></p> | <p>Recycle <i>Reciclar</i></p> | <p>China and Southeast Asia are still accepting this material for recycling as long as it is empty & dry.</p> |
|  <p>Shredded Paper <i>Papel en Trizas</i></p> | <p>Compost <i>Abono</i></p> | <p>Breaks down into compost. Contain in paper bags to prevent blowing away. Too small for recycling.</p> |
|  <p>Boxes with Styrofoam <i>Cajas Con Poliestireno</i></p> | <p>Recycle & Garbage <i>Reciclar y Basura</i></p> | <p>Styrofoam & film plastic are not recyclable. Clean & dry cardboard is recyclable. Must be separated.</p> |
|  <p>Waxed Cardboard <i>Carton Encerado</i></p> | <p>Garbage <i>Basura</i></p> | <p>In most cases "waxed" cardboard actually has a plastic coating. Therefore it cannot be recycled.</p> |
|  <p>Milk Cartons <i>Cartones de Leche</i></p> | <p>Recycle <i>Reciclar</i></p> | <p>Clean & dry milk cartons and aseptic containers such as soy milk and juice boxes are recyclable.</p> |
|  <p>Coffee Cups <i>Taza de Café</i></p> | <p>Garbage <i>Basura</i></p> | <p>Coffee cups have a plastic liner which prevents them from being recyclable or compostable.</p> |
|  <p>Food Scraps <i>Restos de Comida</i></p> | <p>Compost <i>Abono</i></p> | <p>ALL food scraps are compostable. This includes meat, bones, dairy as well as vegetative food scraps.</p> |

HOLIDAY INFORMATION

HOLIDAY COLLECTION SCHEDULE

There will be no service on **Thanksgiving, November 22nd**. Customers with Thursday and Friday service will be serviced on Friday and Saturday. **Christmas and New Year's Day** fall on a Tuesday this year. Customers with Tuesday - Friday service will be serviced Wednesday - Saturday. You can always check your service schedule at www.recology.com/RSMschedules.

HOLIDAY TREE RECYCLING

Sonoma County Fairgrounds Drop-off available from December 26th - January 9th:

Whole trees may be taken to 1350 Bennett Valley Rd, daily from 8am-5pm.
Enter at the Jockey Club. Flocked trees are NOT accepted.

Sonoma County Transfer Station Drop-off available from December 26th - January 16th:

All transfer stations will accept up to (2) unflocked trees at no cost.

Curbside collection available from December 31st - January 11th:

Residential customers may place their tree on the curb the night before their regular collection day. Trees must be cut in half. Flocked trees will NOT be collected.

CAMBIO DE HORARIO DE LOS SIGUIENTES DÍAS FERIADOS

No habrá servicio de recolección de basura el Jueves 22 de Noviembre de 2018 (DÍA DE ACCIÓN DE GRACIAS). Clientes con servicio de recolección el Jueves tendrán servicio el Viernes. Clientes con servicio de recolección el Viernes tendrán servicio el Sábado. NO habrá servicio el Martes 25 de Diciembre de 2018 (NAVIDAD) y el Martes 1 de Enero de 2019 (AÑO NUEVO) Recolección de basura será de miércoles a sábado. Puede confirmar sus fechas de servicio en www.Recology.com/RSMschedules.

RECICLAJE DE ÁRBOLES DE VACACIONES

Sonoma County Fairgrounds 1350 Bennett Valley Rd:

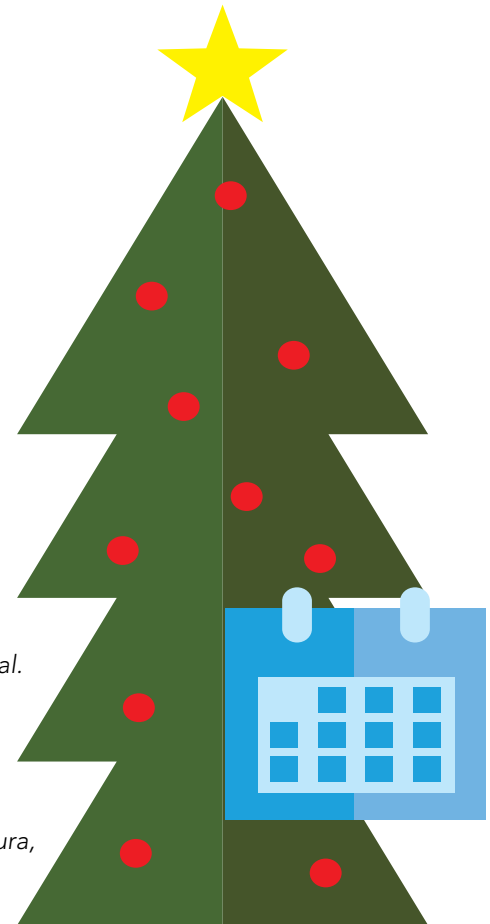
Se aceptarán árboles navideños enteros diario de 8am-5pm de el 26 de Diciembre 2018 hasta el 9 de Enero 2019 Ingresen a el Jockey Club. NO SE ACEPTAN árboles con nieve artificial.

Entrega de Sonoma County Transfer Station hasta el 16 de enero:

Todas las estaciones aceptarán hasta 2 árboles navideños enteros gratuitamente. NO SE ACEPTAN árboles con nieve artificial.

Clientes Residenciales:

31 de diciembre a el 11 de Enero 2019, la noche antes de su día regular de recolección de basura, puede colocar su árbol navideño entero en la acera (banqueta) frente a su residencia. NO serán recogidos árboles con nieve artificial.



Tips For Reducing Holiday Waste

Gifts

- Give a consumable gift. Local honey, cookies or a home cooked meal will always be appreciated.
- Share a service you can provide. Offer car repair, yard work, or home improvement services.
- Make a donation in the recipient's name to a favorite charity.
- Shop for one-of-a-kind gifts at antique stores, estate sales, thrift stores or flea markets.

Gift-Wrap

- Give gifts in reusable tote bags or baskets.
- Design your own gift wrap by using paper bags and adding decorations such as drawings or stamped patterns.
- Wrap gifts in the comics section of the paper, old posters, or maps.
- Reuse your bows, ribbons, boxes, and gift bags.

HAZARDOUS WASTE



The Sonoma County Waste Management Agency has several options for residents to properly dispose of household hazardous waste.

The Household Toxics Facility

500 Mecham Rd, Petaluma
Thursday - Saturday, 7:30am-2:30pm
www.recyclenow.org/toxics/toxics.asp

Community Toxics Collection Events

Collection events are in different areas of Sonoma County every Tuesday from 4-8pm. Events are free to residents. To make an appointment, call 707.795.2025 or email toxicsdisposal@cleanharbors.com.

Toxics Rover Pickup Service

Your toxics can be picked up at your home. Appointments are available on Wednesdays for \$50 per pickup. To make an appointment, call 707.795.2025 or email toxicsdisposal@cleanharbors.com.

E-Waste is not accepted through the above programs. For information on E-Waste recycling please go to www.recyclenow.org/toxics/electronics.asp.

Instalación de productos y residuos tóxicos que se usan para la limpieza del hogar

500 Mecham Rd, Petaluma
Jueves - Sábado, 7:30am-2:30pm

Colección Community Toxics

Este evento se realiza en diferentes áreas de el condado de Sonoma todos los martes de 4-8pm. Éste servicio es disponible solo con cita previa. Para hacer una cita llame al 707.795.2025 o mande un correo electrónico a toxicsdisposal@cleanharbors.com

Para más información visite

www.Recyclenow.org/toxics/toxics.asp.

Servicio de recogida de vehículos todoterreno

Los desperdicios de productos tóxicos pueden ser recogidos en su residencia. Este servicio es disponible los Miércoles con cita previa. Llame para hacer una cita 707.795.2025 o mande un correo electrónico toxicsdisposal@cleanharbors.com. Para obtener más información visite www.recyclenow.org/toxics/toxics.asp.

Residuos Electrónicos no es aceptado a través de los programas anteriores. Para obtener información sobre el reciclaje de residuos electrónicos visite www.recyclenow.org/toxics/electronics.asp.

E-Waste
Residuos electrónicos



Motor Oil
Aceite de Motor



Sharps
Agujas



Batteries
Baterías



Household Toxics
Residuos Tóxicos



WASTE ZERO SERVICES

Compost and recycling services are free of charge for all commercial customers. Let our Waste Zero Team help your business, multi-family dwelling, or school divert materials away from the landfill.

WE OFFER (AT NO CHARGE):

- Technical assistance from Waste Zero Specialists
- Employee trainings & school presentations
- Educational tables at events
- Posters, labels, magnets, & window clings
- Indoor green & blue containers

To reach our Waste Zero Team, call **800.243.0291** or email RecologySonomaMarin@Recology.com.



We want to thank the following Sonoma County restaurants and markets who have successful compost programs:

Alvarado Street Bakery, Petaluma
 Amy's Drive Thru, Rohnert Park
 Andy's Produce Market, Sebastopol
 Applebee's, Rohnert Park
 Aroma Roasters, Santa Rosa
 Arrowood Winery, Glen Ellen
 Bill's Farm Basket, Sebastopol
 Bird & The Bottle, Santa Rosa
 Boxcar Fried Chicken & Biscuits, Sonoma
 Ca'Bianca Restaurant, Santa Rosa
 Café Citti, Kenwood
 Casa Del Mole, Healdsburg
 Cattlemens Restaurant, Petaluma
 Chandí Restaurant, Santa Rosa
 Chili's, Rohnert Park
 City Garden Doughnuts & Coffee, Santa Rosa
 Coffee Bazaar, Guerneville
 Community Market, Santa Rosa, Sebastopol
 Costco, Rohnert Park
 Costeaux French Bakery, Healdsburg, Santa Rosa
 Dhalia & Sage Community Market, Cloverdale
 Diavola Pizzeria, Geyserville
 D's Diner, Sebastopol
 Duke's Spirited Cocktails, Healdsburg
 El Patio Mexican Food, Santa Rosa
 El Tarasco, Sebastopol
 Espresso Café, Santa Rosa
 Fiesta Market, Sebastopol
 Fishetarian Fish Market, Bodega Bay
 Flying Goat Coffee, Healdsburg
 Fork Roadhouse, Sebastopol
 Francis Ford Coppola Winery, Geyserville
 Franco American Bakery, Santa Rosa
 Fulton Marketplace, Santa Rosa
 Fundamental Foods, Santa Rosa
 Gallo Vineyards, Healdsburg
 Glen Ellen Village Market, Glen Ellen
 Graton Resort & Casino, Rohnert Park
 Gravenstein Grill, Sebastopol
 Gravenstein Station, Sebastopol
 Hartford Family Winery, Forestville
 Healdsburg Bar & Grill, Healdsburg
 Healdsburg Shed, Healdsburg
 Henny Penny Restaurant, Petaluma
 Hooters, Rohnert Park
 Hopmonk Tavern, Sebastopol
 Ike's Place, Santa Rosa
 In-N-Out Burger, Petaluma, Santa Rosa, Rohnert Park
 Jackson Family Wines, Santa Rosa
 Juanita Market, Rohnert Park
 Kendall Jackson, Fulton, Healdsburg, Santa Rosa
 La Palapa Restaurant, Santa Rosa
 La Reyna Bakery, Santa Rosa
 Lagunitas Brewing Company, Petaluma
 Lola's Market, Healdsburg, Santa Rosa, Petaluma
 Lombardi's Gourmet Deli, Petaluma
 Los Tres Chiles, Santa Rosa
 Lucas Wharf, Bodega Bay
 Mack's Bar & Grill, Penngrove
 Marin-Sonoma Produce Co., Petaluma
 Martha's Old Mexico, Sebastopol
 Martin Ray Winery, Santa Rosa
 Mary's Pizza Shack, Santa Rosa, Petaluma, Rohnert Park
 Matanzas Creek Winery, Santa Rosa
 Matero's Cocina Latina, Healdsburg
 Mexico Lindo, Graton
 Molsberry Market, Santa Rosa
 Montgomery Village, Santa Rosa
 Mountain Mike's Pizza, Rohnert Park, Santa Rosa
 Noodle Rice Etc., Guerneville
 Oakville Grocery, Healdsburg
 Olive Garden, Rohnert Park
 Oliver's Market, Santa Rosa, Cotati
 Outback Steakhouse, Rohnert Park
 Pacific Market, Santa Rosa
 Panaderia El Palomo, Cloverdale
 Papa's Pizza Café, Cloverdale
 Patisserie Angelica, Sebastopol
 Paul Hobbs Winery, Sebastopol
 Pearl Restaurant, Petaluma
 Peet's Coffee, Cotati
 Pelican Plaza Grocery & Deli, Bodega Bay
 Penngrove Pub, Penngrove
 Pepe's Mexican Restaurant, Santa Rosa
 Petaluma Market, Petaluma
 Preferred Sonoma Caterers, Petaluma
 Ramen Gaijin, Sebastopol
 Ram's Gate Winery, Sonoma
 Red Bird Bakery, Santa Rosa
 Red Lobster, Rohnert Park
 Redwood Café, Cotati
 River Rock Casino, Geyserville
 Rugged Coast Brewing, Santa Rosa
 Russian River Brewing, Santa Rosa
 Russian River Pub, Forestville
 Russian River Vineyard, Forestville
 Safeway, Santa Rosa, Rohnert Park, Sebastopol
 Sally Tomatoes, Rohnert Park
 Screamin' Mimi's, Sebastopol
 Sismic Brewing, Santa Rosa
 Shari's Diner, Rohnert Park
 Shelton's Natural Foods Market, Healdsburg
 Siduri Winery, Santa Rosa
 Silver Oak Cellars, Healdsburg
 Simi Winery Vineyards, Healdsburg
 Singlethread Farm Restaurant, Healdsburg
 Smart & Final, Santa Rosa, Petaluma
 Sonoma Raceway, Sonoma
 St. Francis Winery, Santa Rosa
 Stark's Steakhouse, Santa Rosa
 Steele & Hops, Santa Rosa
 Stormy's Bloomfield Tavern, Petaluma
 Super Latino Market, Santa Rosa
 Super Market Rancho Mendoza, Santa Rosa
 Taqueria El Paisa, Rohnert Park
 Taqueria El Sombrero, Healdsburg
 Taqueria Los Primos, Santa Rosa
 Taqueria Santa Rosa, Santa Rosa
 The Fig Café, Glen Ellen
 Underwood Bar & Bistro, Graton
 Union Hotel Restaurant, Occidental
 Verite Winery, Healdsburg
 Vinwood Cellard, Geyserville
 Virginia Dare Winery, Geyserville
 Viva Mexico, Sebastopol
 Whole Foods Market, Petaluma, Sebastopol, Santa Rosa
 Willow Wood Market, Graton
 Zini's Diner, Cloverdale