



Recology  
Sonoma Marin  
WASTE ZERO

# The Recology<sup>®</sup> RESOURCE

So, You Think You Can Recycle? See Page 3!

WHAT'S INSIDE: Fall Updates p2 / Where Does It Go?\* p3 /  
Holiday Information\* p4 / Hazardous Waste\* p5 / Waste Zero Services p6  
(\*English & Spanish)



COTATI | FALL 2018 EDITION







A Recology sort line worker sorts a load of single-stream recycling

## FALL UPDATES

As we approach the end of our first year in Sonoma and Marin counties, we have to take a moment to say “Thank You!” for all of the local support we have received. Have you seen us hosting a table at a community event? We have been to over 60 of them so far this year. We love meeting our customers, answering questions, and providing educational materials. We are truly inspired by how passionate our customers are about recycling AND composting – and doing it correctly too!

Speaking of compost service, we are proud to say that we have added or increased compost service at over 200 commercial accounts this year. This includes schools, restaurants, markets, hardware stores, florists, hospitals, and apartment complexes. That is a lot of material that was once going to the

landfill and is now being turned into nutrient-rich compost instead.

That being said, this year has not been without challenges. China continues to enforce its “National Sword” policy. This places strict regulations on the amount of acceptable contamination allowed in the bales of recyclable materials they import. While some cities in the US have abandoned recycling because of this, we are working harder than ever to make sure our materials are clean and dry so they can continue to be recycled. This means it is imperative to keep contaminants such as food waste and plastic bags out of your recycling bins and carts. One of the worst contaminants we receive are hypodermic needles. We have seen an increase of these mixed with recyclables which is extremely dangerous to our sort-line workers. You can find

information on what to do with sharps on page 5 of this newsletter.

Albert Einstein once said “In the middle of difficulty lies opportunity”. **While recycling is on the forefront of the collective consciousness, we see the challenges we are experiencing as an opportunity to encourage and educate our customers as much as possible.** Please reach out if you have any questions, follow us on Facebook, and help us spread the good word of “Reduce, Reuse, Recycle, and Recologize!”

### CONTACT US

[RecologySonomaMarin@Recology.com](mailto:RecologySonomaMarin@Recology.com)










[Recology.com/SonomaMarin](https://www.Recology.com/SonomaMarin)

800.243.0291



[Facebook.com/RecologySonomaMarin](https://www.facebook.com/RecologySonomaMarin)

# WHERE DOES IT GO?

<u>WHAT?</u>	<u>WHERE?</u>	<u>WHY?</u>
 <p><b>Plastic Cups</b> <i>Vaso de Plástico</i></p>	<p><b>Recycle</b> <i>Reciclar</i></p>	<p>China and Southeast Asia are still accepting this material for recycling as long as it is <b>empty &amp; dry</b>.</p>
 <p><b>"Compostable" Plastics</b> <i>Plástico Compostable</i></p>	<p><b>Garbage</b> <i>Basura</i></p>	<p>Does not break down into compost at the facilities where we take material. Cannot be recycled.</p>
 <p><b>Plastic Bags &amp; Film</b> <i>Bolsas de plástico</i></p>	<p><b>Garbage</b> <i>Basura</i></p>	<p>Not recyclable in a single-stream system. Gets tangled in sorting equipment.</p>
 <p><b>Plastic Utensils &amp; Straws</b> <i>Utensilios y pajitas de plástico</i></p>	<p><b>Garbage</b> <i>Basura</i></p>	<p>Not recyclable in a single-stream system. Too small to be sorted. Includes compostable plastics.</p>
 <p><b>Clear Plastic Clamshells</b> <i>Cajas Para Comida Para Llevar</i></p>	<p><b>Recycle</b> <i>Reciclar</i></p>	<p>China and Southeast Asia are still accepting this material for recycling as long as it is <b>empty &amp; dry</b>.</p>
 <p><b>Shredded Paper</b> <i>Papel en Trizas</i></p>	<p><b>Compost</b> <i>Abono</i></p>	<p>Breaks down into compost. <b>Contain in paper bags to prevent blowing away</b>. Too small for recycling.</p>
 <p><b>Boxes with Styrofoam</b> <i>Cajas Con Poliestireno</i></p>	<p><b>Recycle &amp; Garbage</b> <i>Reciclar y Basura</i></p>	<p>Styrofoam &amp; film plastic are not recyclable. <b>Clean &amp; dry</b> cardboard is recyclable. <b>Must be separated</b>.</p>
 <p><b>Waxed Cardboard</b> <i>Carton Encerado</i></p>	<p><b>Garbage</b> <i>Basura</i></p>	<p>In most cases "waxed" cardboard actually has a plastic coating. Therefore it cannot be recycled.</p>
 <p><b>Milk Cartons</b> <i>Cartones de Leche</i></p>	<p><b>Recycle</b> <i>Reciclar</i></p>	<p><b>Clean &amp; dry</b> milk cartons and aseptic containers such as soy milk and juice boxes are recyclable.</p>
 <p><b>Coffee Cups</b> <i>Taza de Café</i></p>	<p><b>Garbage</b> <i>Basura</i></p>	<p>Coffee cups have a plastic liner which prevents them from being recyclable or compostable.</p>
 <p><b>Food Scraps</b> <i>Restos de Comida</i></p>	<p><b>Compost</b> <i>Abono</i></p>	<p>ALL food scraps are compostable. This includes meat, bones, dairy as well as vegetative food scraps.</p>

# HOLIDAY INFORMATION

## HOLIDAY COLLECTION SCHEDULE

There will be no service on **Thanksgiving, November 22nd**. Customers with Thursday and Friday service will be serviced on Friday and Saturday. **Christmas and New Year's Day** fall on a Tuesday this year. Customers with Tuesday - Friday service will be serviced Wednesday - Saturday. You can always check your service schedule at [www.recology.com/RSMschedules](http://www.recology.com/RSMschedules).

## HOLIDAY TREE RECYCLING

### Fire Station Drop-off available from December 26th - January 16th:

Whole trees may be taken to 1 East Cotati Av, daily from 8am-4pm. Flocked trees are NOT accepted.

### Sonoma County Transfer Station Drop-off available from December 26th - January 16th:

All transfer stations will accept up to (2) unflocked trees at no cost.

### Curbside collection available from January 7th - January 11th:

Residential customers may place their whole tree on the curb the night before their regular collection day. Trees should be cut in half. Flocked trees will NOT be collected.

## CAMBIO DE HORARIO DE LOS SIGUIENTES DÍAS FERIADOS

No habrá servicio de recolección de basura el Jueves 22 de Noviembre de 2018 (DÍA DE ACCIÓN DE GRACIAS). Clientes con servicio de recolección el Jueves tendrán servicio el Viernes. Clientes con servicio de recolección el Viernes tendrán servicio el Sábado. NO habrá servicio el Martes 25 de Diciembre de 2018 (NAVIDAD) y el Martes 1 de Enero de 2019 (AÑO NUEVO) Recolección de basura será de miércoles a sábado. Puede confirmar sus fechas de servicio en [www.Recology.com/RSMschedules](http://www.Recology.com/RSMschedules).

## RECICLAJE DE ÁRBOLES DE VACACIONES

### Dejar en la estación de bomberos del 26 de diciembre al 16 de enero:

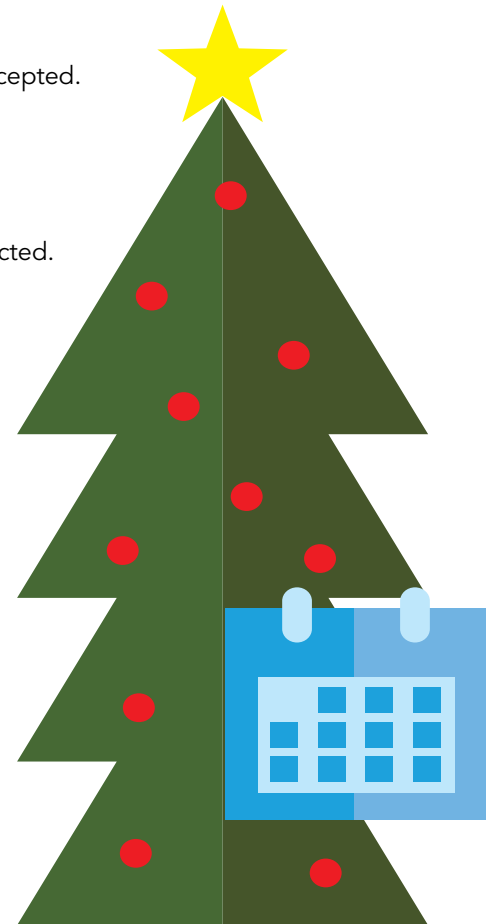
Se pueden llevar árboles enteros al 1 Av. East Cotati, todos los días de 8 am a 4 pm. NO se aceptan árboles con nieve artificial.

### Entrega de Sonoma County Transfer Station hasta el 16 de enero:

Todas las estaciones aceptarán hasta 2 árboles navideños enteros gratuitamente. NO SE ACEPTAN árboles con nieve artificial.

### Clientes Residenciales:

7 al 11 de enero 2019, la noche antes de su día regular de recolección de basura, puede colocar su árbol navideño entero en la acera (banqueta) frente a su residencia. Los árboles deben ser cortados por la mitad. NO serán recogidos árboles con nieve artificial.



## Tips For Reducing Holiday Waste

### Gifts

- Give a consumable gift. Local honey, cookies or a home cooked meal will always be appreciated.
- Share a service you can provide. Offer car repair, yard work, or home improvement services.
- Make a donation in the recipient's name to a favorite charity.
- Shop for one-of-a-kind gifts at antique stores, estate sales, thrift stores or flea markets.

### Gift-Wrap

- Give gifts in reusable tote bags or baskets.
- Design your own gift wrap by using paper bags and adding decorations such as drawings or stamped patterns.
- Wrap gifts in the comics section of the paper, old posters, or maps.
- Reuse your bows, ribbons, boxes, and gift bags.



# HAZARDOUS WASTE



The Sonoma County Waste Management Agency has several options for residents to properly dispose of household hazardous waste.

### The Household Toxics Facility

500 Mecham Rd, Petaluma  
Thursday - Saturday, 7:30am-2:30pm  
[www.recyclenow.org/toxics/toxics.asp](http://www.recyclenow.org/toxics/toxics.asp)

### Community Toxics Collection Events

Collection events are in different areas of Sonoma County every Tuesday from 4-8pm. Events are free to residents. To make an appointment, call 707.795.2025 or email [toxicsdisposal@cleanharbors.com](mailto:toxicsdisposal@cleanharbors.com).

### Toxics Rover Pickup Service

Your toxics can be picked up at your home. Appointments are available on Wednesdays for \$50 per pickup. To make an appointment, call 707.795.2025 or email [toxicsdisposal@cleanharbors.com](mailto:toxicsdisposal@cleanharbors.com).

**E-Waste** is not accepted through the above programs. For information on E-Waste recycling please go to [www.recyclenow.org/toxics/electronics.asp](http://www.recyclenow.org/toxics/electronics.asp).

### Instalación de productos y residuos tóxicos que se usan para la limpieza del hogar

500 Mecham Rd, Petaluma  
Jueves - Sábado, 7:30am-2:30pm

### Colección Community Toxics

Este evento se realiza en diferentes áreas de el condado de Sonoma todos los martes de 4-8pm. Éste servicio es disponible solo con cita previa. Para hacer una cita llame al 707.795.2025 o mande un correo electrónico a [toxicsdisposal@cleanharbors.com](mailto:toxicsdisposal@cleanharbors.com)

Para más información visite

[www.Recyclenow.org/toxics/toxics.asp](http://www.Recyclenow.org/toxics/toxics.asp).

### Servicio de recogida de vehículos todoterreno

Los desperdicios de productos tóxicos pueden ser recogidos en su residencia. Este servicio es disponible los Miércoles con cita previa. Llame para hacer una cita 707.795.2025 o mande un correo electrónico [toxicsdisposal@cleanharbors.com](mailto:toxicsdisposal@cleanharbors.com). Para obtener más información visite [www.recyclenow.org/toxics/toxics.asp](http://www.recyclenow.org/toxics/toxics.asp).

**Residuos Electrónicos** no es aceptado a través de los programas anteriores. Para obtener información sobre el reciclaje de residuos electrónicos visite [www.recyclenow.org/toxics/electronics.asp](http://www.recyclenow.org/toxics/electronics.asp).

E-Waste  
*Residuos electrónicos*



Motor Oil  
*Aceite de Motor*



Sharps  
*Agujas*



Batteries  
*Baterías*



Household Toxics  
*Residuos Tóxicos*



# WASTE ZERO SERVICES

Compost and recycling services are free of charge for all commercial customers. Let our Waste Zero Team help your business, multi-family dwelling, or school divert materials away from the landfill.

## WE OFFER (AT NO CHARGE):

- Technical assistance from Waste Zero Specialists
- Employee trainings & school presentations
- Educational tables at events
- Posters, labels, magnets, & window clings
- Indoor green & blue containers

To reach our Waste Zero Team, call **800.243.0291** or email [RecologySonomaMarin@Recology.com](mailto:RecologySonomaMarin@Recology.com).



## We want to thank the following Sonoma County restaurants and markets who have successful compost programs:

Alvarado Street Bakery, Petaluma  
 Amy's Drive Thru, Rohnert Park  
 Andy's Produce Market, Sebastopol  
 Applebee's, Rohnert Park  
 Aroma Roasters, Santa Rosa  
 Arrowood Winery, Glen Ellen  
 Bill's Farm Basket, Sebastopol  
 Bird & The Bottle, Santa Rosa  
 Boxcar Fried Chicken & Biscuits, Sonoma  
 Ca'Bianca Restaurant, Santa Rosa  
 Café Citti, Kenwood  
 Casa Del Mole, Healdsburg  
 Cattlemens Restaurant, Petaluma  
 Chandl Restaurant, Santa Rosa  
 Chili's, Rohnert Park  
 City Garden Doughnuts & Coffee, Santa Rosa  
 Coffee Bazaar, Guerneville  
 Community Market, Santa Rosa, Sebastopol  
 Costco, Rohnert Park  
 Costeaux French Bakery, Healdsburg, Santa Rosa  
 Dhalia & Sage Community Market, Cloverdale  
 Diavola Pizzeria, Geyserville  
 D's Diner, Sebastopol  
 Duke's Spirited Cocktails, Healdsburg  
 El Patio Mexican Food, Santa Rosa  
 El Tarasco, Sebastopol  
 Espresso Café, Santa Rosa  
 Fiesta Market, Sebastopol  
 Fishetarian Fish Market, Bodega Bay  
 Flying Goat Coffee, Healdsburg  
 Fork Roadhouse, Sebastopol  
 Francis Ford Coppola Winery, Geyserville  
 Franco American Bakery, Santa Rosa  
 Fulton Marketplace, Santa Rosa  
 Fundamental Foods, Santa Rosa  
 Gallo Vineyards, Healdsburg  
 Glen Ellen Village Market, Glen Ellen  
 Graton Resort & Casino, Rohnert Park  
 Gravenstein Grill, Sebastopol  
 Gravenstein Station, Sebastopol  
 Hartford Family Winery, Forestville  
 Healdsburg Bar & Grill, Healdsburg  
 Healdsburg Shed, Healdsburg  
 Henny Penny Restaurant, Petaluma  
 Hooters, Rohnert Park  
 Hopmonk Tavern, Sebastopol  
 Ike's Place, Santa Rosa  
 In-N-Out Burger, Petaluma, Santa Rosa, Rohnert Park  
 Jackson Family Wines, Santa Rosa  
 Juanita Market, Rohnert Park  
 Kendall Jackson, Fulton, Healdsburg, Santa Rosa  
 La Palapa Restaurant, Santa Rosa  
 La Reyna Bakery, Santa Rosa  
 Lagunitas Brewing Company, Petaluma  
 Lola's Market, Healdsburg, Santa Rosa, Petaluma  
 Lombardi's Gourmet Deli, Petaluma  
 Los Tres Chiles, Santa Rosa  
 Lucas Wharf, Bodega Bay  
 Mack's Bar & Grill, Penngrove  
 Marin-Sonoma Produce Co., Petaluma  
 Martha's Old Mexico, Sebastopol  
 Martin Ray Winery, Santa Rosa  
 Mary's Pizza Shack, Santa Rosa, Petaluma, Rohnert Park  
 Matanzas Creek Winery, Santa Rosa  
 Matero's Cocina Latina, Healdsburg  
 Mexico Lindo, Graton  
 Molsberry Market, Santa Rosa  
 Montgomery Village, Santa Rosa  
 Mountain Mike's Pizza, Rohnert Park, Santa Rosa  
 Noodle Rice Etc, Guerneville  
 Oakville Grocery, Healdsburg  
 Olive Garden, Rohnert Park  
 Oliver's Market, Santa Rosa, Cotati  
 Outback Steakhouse, Rohnert Park  
 Pacific Market, Santa Rosa  
 Panaderia El Palomo, Cloverdale  
 Papa's Pizza Café, Cloverdale  
 Patisserie Angelica, Sebastopol  
 Paul Hobbs Winery, Sebastopol  
 Pearl Restaurant, Petaluma  
 Peet's Coffee, Cotati  
 Pelican Plaza Grocery & Deli, Bodega Bay  
 Penngrove Pub, Penngrove  
 Pepe's Mexican Restaurant, Santa Rosa  
 Petaluma Market, Petaluma  
 Preferred Sonoma Caterers, Petaluma  
 Ramen Gaijin, Sebastopol  
 Ram's Gate Winery, Sonoma  
 Red Bird Bakery, Santa Rosa  
 Red Lobster, Rohnert Park  
 Redwood Café, Cotati  
 River Rock Casino, Geyserville  
 Rugged Coast Brewing, Santa Rosa  
 Russian River Brewing, Santa Rosa  
 Russian River Pub, Forestville  
 Russian River Vineyard, Forestville  
 Safeway, Santa Rosa, Rohnert Park, Sebastopol  
 Sally Tomatoes, Rohnert Park  
 Screamin' Mimi's, Sebastopol  
 Sismic Brewing, Santa Rosa  
 Shari's Diner, Rohnert Park  
 Shelton's Natural Foods Market, Healdsburg  
 Siduri Winery, Santa Rosa  
 Silver Oak Cellars, Healdsburg  
 Simi Winery Vineyards, Healdsburg  
 Singlethread Farm Restaurant, Healdsburg  
 Smart & Final, Santa Rosa, Petaluma  
 Sonoma Raceway, Sonoma  
 St. Francis Winery, Santa Rosa  
 Stark's Steakhouse, Santa Rosa  
 Steele & Hops, Santa Rosa  
 Stormy's Bloomfield Tavern, Petaluma  
 Super Latino Market, Santa Rosa  
 Super Market Rancho Mendoza, Santa Rosa  
 Taqueria El Paisa, Rohnert Park  
 Taqueria El Sombrero, Healdsburg  
 Taqueria Los Primos, Santa Rosa  
 Taqueria Santa Rosa, Santa Rosa  
 The Fig Café, Glen Ellen  
 Underwood Bar & Bistro, Graton  
 Union Hotel Restaurant, Occidental  
 Verite Winery, Healdsburg  
 Vinwood Cellard, Geyserville  
 Virginia Dare Winery, Geyserville  
 Viva Mexico, Sebastopol  
 Whole Foods Market, Petaluma, Sebastopol, Santa Rosa  
 Willow Wood Market, Graton  
 Zini's Diner, Cloverdale