

The Recycle Reader



SUMMER 2018

HOW ARE RECYCLABLES ENDING UP IN OUR LANDFILL?

And What We Can Do to Change That

Stricter rules on the quality of recyclable materials poses a huge problem for our community's recycling system. CalRecycle estimates that a third of all recyclable material generated in California annually is currently exported to foreign markets, and 62 percent of that goes to China. On March 1, 2018, China implemented a new program which limits the import of contaminated recyclable commodities. Before, they allowed up to 10 percent contamination in bales of recycled materials. Now, we are facing standards of less than 1 percent contamination.

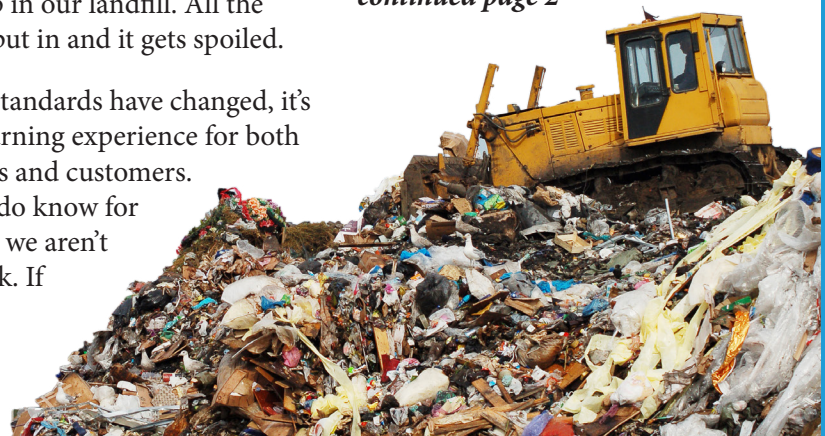
Contamination is anything that shouldn't be placed inside your recycling (blue) cart, including some items that may typically be

considered recyclable. For example, a greasy pizza box placed in the recycling cart is a contaminated item. Food waste in a food container, whether that container itself is recyclable or not, is considered garbage. To make it worse, when these items are placed into a recycling cart, all of the other recyclable items in the cart and truck load are at risk of becoming contaminated waste and ending up in our landfill. All the work we put in and it gets spoiled.

As these standards have changed, it's been a learning experience for both processors and customers. What we do know for certain is: we aren't going back. If we don't

change our recycling habits at home and work, our efforts could be wasted. Now you're probably thinking that sounds bleak, but there is something we can do to start correcting the issue at-hand. For now, each person can help by cleaning recycled products before they are placed in the recycling bin inside the home or office - a quick rinse or wipe down will help tremendously.

continued page 2



THE GREEN CART IS BIG, USE IT!

Maximize Your Green Cart Waste; Minimize Landfilling

Placing green waste in the green carts ensures it stays out of the landfill, where the extra greenhouse gases would be produced. Make sure clean green waste and organic matter makes it into the green carts. From there compost is made and our local farmers can in turn grow our food from it.

ACCEPTED

- ✓ Yard Trimmings
- ✓ Small Branches
- ✓ Leaves
- ✓ Weeds
- ✓ Garden Plants
- ✓ Wood Chips

NOT ACCEPTED

- ✗ Animal Waste
- ✗ Rocks
- ✗ Painted/Treated Wood

TOSS YOUR TIRES - FOR FREE!

Limited coupons available now for tire recycling*

Yuba and Sutter County residents can now request a coupon for the free drop-off of up to 20 residentially-generated passenger car and light truck tires per household (for rims up to 17 inches in diameter). Coupons will be issued on a first come, first served basis while supplies last. Coupons will expire 30 days from the date of issue and a valid coupon must be presented when the waste tires are delivered to the drop-off location. Tires do not need to be removed from the rims.

Call the Regional Waste Management Authority weekdays between 9:00 a.m. and 12:00 noon and 1:00 p.m. and 4:00 p.m. at 530-634-6890 to request a coupon or for more information. Please be prepared when you call to provide



the number of tires that you have for disposal. This program is for residential use only – no businesses. If hauling more than 9 tires at one time, the Local Enforcement Agency conditions on the reverse side of the coupon must be completed. This program is funded by a grant from the Department of Resources Recycling and Recovery (CalRecycle)

KEEP REUSING THOSE PLASTIC BAGS

Plastic single use bags are still a problem on the recyclables sorting line

It's been two years since California banned single-use plastic bags. We've seen a significant decrease of plastic bags come through, which is a huge win. Plastic garbage bags, grocery bags, dry cleaning bags, and food wrap that still make it into recycling carts and bins get caught in sorting machinery. When the sorting machinery is jammed, it leads to an hour or more of downtime.

So how are we supposed to recycle those plastic bags? Good question. The more obvious answer is to avoid them altogether. Reusable bags are cheaper and it seems like most people are jumping at the chance to

give you one, as long as you don't mind promoting their logo/brand. The other is to find a local source that recycles plastic bags in bulk, such as large retailers or grocery stores.

If you aren't sure where you can get one of those reusable grocery bags, Recology Yuba-Sutter does have a limited amount to give to customers. Please stop by our Marysville transfer station office to check our latest supply.



...LANDFILL

Continued from page 1

When emptying your home or work recycling, remember to dump your recycled waste in the blue recycling cart loosely, meaning without a plastic bag. Allowing sorters to easily see your clean recycled waste is the most efficient way to ensure we maximize our recycling efforts. These are a few of the ways you can help your community meet the new standards.

Keep connected by visiting recology.com for more updates or look for updates as we continue to inform customers of the latest recycling news.

YUBA-SUTTER HOUSEHOLD HAZARDOUS WASTE FACILITY

It is illegal to put household hazardous waste in the trash or recycling carts. Hazardous waste includes items such as fluorescent bulbs, pesticides, sharps, medications, and other toxic chemicals.

When hazardous wastes end up in a landfill, they can cause serious threats to humans, wildlife and the environment. Please drop off these items at this facility for safe disposal.

WHERE TO FIND US

134 Burns Drive
Yuba City, CA 95991
(530) 743-6933

OUR HOURS

Saturday: 8:00 AM – 4:00 PM
Holiday Schedule: Closed
Thanksgiving, Christmas and
New Year's days.



3001 Levee Rd, Marysville, CA 95901
Mon-Fri: 8AM-4:30PM · (530) 743-6933