

# The Recology® RESOURCE

WHAT'S INSIDE: Hello! p2 / The Recology Lifecycles p3 / Recycle\* p4 /  
Compost\* p6 / Bulky Item Pickup\* p8 / Hazardous Waste\* p9 / Legislation p10 /  
Waste Zero Services p11 / Community p12 (\*English & Spanish)

STINSON BEACH & BOLINAS | SPRING 2018 EDITION





## HELLO STINSON BEACH & BOLINAS!

We are genuinely excited to join the Marin County community as your new recycling, compost, and garbage collection service provider! The Recology mission represents a fundamental shift from traditional waste management to resource recovery. Our vision at Recology is to create a world without waste by finding the best & highest use for all materials we collect.

We've been recycling long before there was even an industry for it. Our founders immigrated to San Francisco in the mid 1800's looking for opportunity and they eventually found work doing what no one else wanted to do - picking up other people's garbage.

They called themselves scavengers - in fact, the Recology Sunset Scavenger company name is a nod to these same founders. The original scavengers sorted through refuse materials to find what was salvageable. They would then wash, package, and sell materials of value. Little did they know that they were creating a foundation for our current business model today.

We have over 100 years of experience and 45 operating companies that provide service to over four million customers from California to Washington. We are excited to bring our vision, history, and knowledge to Marin County.

Get ready for new energy, an experienced vision for waste reduction, and improved service. We also have many educational materials and tools to help our commercial and multi-family dwelling customers recycle and compost more.

In this guide you'll learn more about our commitment to the community, customer service, and the environment.

### GET IN TOUCH

Mon-Fri 7a-6p, Sat 7a-3p

[RecologySonomaMarin@Recology.com](mailto:RecologySonomaMarin@Recology.com)

[Recology.com/SonomaMarin](https://www.Recology.com/SonomaMarin)

800.243.0291



Look for us on Facebook & NextDoor!



# THE RECOLOGY LIFECYCLES

## RECYCLE



## COMPOST



# WHAT CAN I RECYCLE?

You can recycle **glass, metal, plastic containers, as well as paper and cardboard.**  
Please make sure food and liquids are removed.

*Puede reciclar vidrio, metal, recipientes de plástico, papel y cartón.  
Por favor, asegúrese de eliminar los alimentos y líquidos.*



**PLEASE DO NOT  
PLACE RECYCLABLE  
MATERIALS  
IN PLASTIC BAGS.**

## METAL

Metal



- ✓ **Aluminum cans & steel**  
Latas de aluminio y acero
- ✓ **Aluminum foil & trays**  
Papel de aluminio y charolas

## PLASTIC CONTAINERS

Contenedores de plástico



- ✓ **Bottles (leave caps on)**  
Botellas (dejar tapones)
- ✓ **Containers**  
Contenedores
- ✓ **Clamshells containers**  
Cajas para comida para llevar
- ✓ **Cups**  
Tazas

## GLASS

Vaso



- ✓ **Glass bottles & jars**  
(metal caps & lids too)  
Botellas y frascos de vidrio  
(tapas de metal)

## PAPER & CARDBOARD

Papel y cartón



- ✓ **Bags (paper only, no plastic)**  
Bolsas (papel solamente, no plástico)
- ✓ **Cardboard (non-waxed)**  
Cartón (sin cera)
- ✓ **Cereal boxes**  
Cajas de cereal
- ✓ **Office paper**  
Papel de oficina
- ✓ **Egg cartons (paper)**  
Cartones de huevos  
(de papel)
- ✓ **Envelopes**  
Sobres
- ✓ **Juice or soy milk boxes with foil liner**  
Cajas de leche de zumo o soja con papel de aluminio
- ✓ **Junk mail & magazines**  
Correo basura y revistas
- ✓ **Newspapers**  
Periódico
- ✓ **Packing paper**  
Papel de embalaje
- ✓ **Phonebooks**  
Guías telefónicas
- ✓ **Sticky notes**  
Notas adhesivas
- ✓ **Waxy paper milk or juice cartons**  
Cartones de leche con cera
- ✓ **Wrapping paper (non-metallic)**  
Papel de regalo  
(no metálico)

## UNACCEPTED MATERIALS

Materiales no aceptados



- ✗ **Batteries**  
Baterías
- ✗ **Ceramic dishware or glassware**  
Vajilla de cerámica
- ✗ **Clothing, linens & rags**  
Ropa, sábanas y trapos
- ✗ **Coat hangers**  
Ganchos de ropa
- ✗ **Cork (natural & plastic)**  
Corcho (natural y plástico)
- ✗ **Electronics**  
Electrónicos
- ✗ **Food scraps**  
Restos de comida
- ✗ **Glass mirrors & windows**  
Espejos de vidrio y ventanas
- ✗ **Light bulbs**  
Bombillas de luz
- ✗ **Plastic bags, wrappers or film**  
Bolsas de plástico, envoltorios o películas
- ✗ **Plastic items mixed with metal, fabric or rubber**  
Artículos plásticos mezclados con metal, tela o goma
- ✗ **Plastics labeled "compostable"**  
Plástico etiquetado como "compostable"
- ✗ **Shredded paper**  
Papel en trizas
- ✗ **Soiled paper**  
Papel sucio
- ✗ **Styrofoam**  
Espuma de poliestireno
- ✗ **Waxed cardboard & paper**  
Cartón y papel encerado
- ✗ **Wood**  
Madera
- ✗ **Yard trimmings**  
Recortes de jardín

# WHAT CAN I COMPOST?

You can place **plant trimmings & wood** in your compost bin.

Puede colocar *recortes de plantas y madera* en su contenedor de compost



**PLEASE DO NOT  
PLACE COMPOSTABLE  
MATERIALS  
IN PLASTIC BAGS.**

## PLANTS

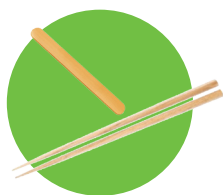
Plantas



- ✓ **Branches & brush**  
*Ramas y plantas*
- ✓ **Flowers & floral trimmings**  
*Flores y adornos florales*
- ✓ **Grasses & weeds**  
*Pastos y malas hierbas*
- ✓ **Leaves**  
*Hojas*
- ✓ **Tree trimmings** (*less than 4" diameter & 4' long*)  
*Recortes de árboles (menos de 4" de diámetro y 4' de largo)*

## WOOD

Madera



- ✓ **Wood – small pieces of lumber or sawdust from untreated wood only**  
*Madera - pequeños trozos de madera o aserrín de madera limpia solamente*
- ✓ **Wooden chop sticks & coffee stir sticks**  
*Palitos de madera y palitos de café*

## UNACCEPTED MATERIALS

*Materiales no aceptados*



- ✗ **Absolutely no food scraps of any kind**  
*Absolutamente sin restos de comida de ningún tipo*
- ✗ **Aluminum foil or trays**  
*Papel de aluminio o bandejas*
- ✗ **Cat litter or animal feces**  
*Arena para gatos o heces de animales*
- ✗ **Clothing, linens, & rags**  
*Ropa, sábanas y trapos*
- ✗ **"Compostable" labeled plastics** (*bags, utensils, cups*)  
*Plásticos etiquetados como "compostables" (bolsas, utensilios, tazas)*
- ✗ **Corks – natural & plastic**  
*Corchos - natural y plástico*
- ✗ **Dirt, rocks, or stone**  
*Tierra, rocas o piedra*
- ✗ **Flower pots or trays**  
*Macetas o bandejas*
- ✗ **Foil-backed or plastic-backed paper**  
*Papel con respaldo de aluminio o plástico*
- ✗ **Juice or soy milk boxes with foil liner**  
*Cajas de leche de zumo o soja con papel de aluminio*
- ✗ **Liquids or ice**  
*Líquidos o hielo*
- ✗ **Milk & juice cartons**  
*Cartones de leche y jugo*
- ✗ **Palm fronds, cactus, or bamboo**  
*Hojas de palma, cactus o bambú*
- ✗ **Plastic bags, wrappers, or film**  
*Bolsas de plástico, envoltorios o películas*
- ✗ **Styrofoam**  
*Espuma de poliestireno*
- ✗ **Treated wood – plywood, press board, painted or stained wood**  
*Madera - madera contrachapada, tablero de presión, triplay madera pintada o teñida*

# BULKY ITEM PICKUP

Do you have an old sofa, mattress, or even an old TV taking up space? We can pick them up for you. All you have to do is contact us by phone or send us an email at [RecologySonomaMarin@recology.com](mailto:RecologySonomaMarin@recology.com) and we will pick up that Bulky Item right at the curb. "Bulky Items" (or "BIPs" for short), are those "beyond-repair" appliances, furniture, or items that don't fit into your car. As your local recycling experts, we take great care in ensuring that anything and

everything that can be recycled, is recycled. You can be assured that the recycling process is handled in an ecologically and socially responsible manner.

If it's just not worth fixing or donating, Recology is here to help. We will pick up broken landscaping equipment such as lawn mowers and leaf blowers with combustible engines as long as all of the fluids are completely drained. Even small auto parts (under 60 lbs) are

accepted as part of the BIP program.

Hazardous waste and propane tanks, however, cannot be accepted and should be taken to your local Hazardous Waste Facility or a community toxics collection event.



Feel like a VIP and call in a BIP today!



## THE BASICS *Los Basicos*

- ✓ **There is a charge for this service**  
*Hay un cargo por este servicio*
- ✓ **Collection must be arranged in advance**  
*La colección debe ser arreglada por adelantado*
- ✓ **Driver must be able to load items safely into truck**  
*El conductor debe poder cargar los artículos de manera segura en el camión*
- ✓ **No liquid waste or hazardous materials**  
*Sin desechos líquidos ni materiales peligrosos*





# HAZARDOUS WASTE

## MARIN HOUSEHOLD HAZARDOUS WASTE FACILITY

The Marin Household  
Hazardous Waste Facility  
is located at  
565 Jacoby Street in San Rafael.  
**FREE** residential drop-off.

**No appointment needed!**

Tuesday - Saturday 8a-3:30p.

Commercial drop-off is  
available (fees apply) by appointment.

Call 415.485.6806.



California law prohibits the disposal of hazardous waste in landfills. Do not place hazardous waste in any bins or carts, as it may harm human health and the environment.

**Toxic Away Days** are household hazardous waste drop off days in West Marin by appointment only. To make an appointment, call 800.207.8222 xt 204. For more information on how to safely dispose of toxics please go to [www.marinhhw.com](http://www.marinhhw.com)

**MAY 5**  
Point Reyes Station  
Fire Station, 4th & B

**OCTOBER 27**  
Bolinas  
Mesa Park  
100 Mesa Road



# LEGISLATION INFO

We work closely with the communities we service to ensure that our shared sustainability goals are achieved.

**We help our commercial customers comply with state laws  
AB 341 and AB 1826.**

## AB 341 Commercial Recycling

California Assembly Bill 341 (AB 341) mandates recycling for all businesses and schools that generate more than 4 cubic yards of solid waste per week, and multifamily dwellings of 5 units or more. AB 341 is designed to reduce greenhouse gas emissions in the state by 5 million metric tons of carbon dioxide (CO<sub>2</sub>).

Businesses and property owners are able to subscribe to recycling services to comply. Property owners of a business or multifamily dwelling may also require tenants to source separate their recyclable materials to aid in compliance.



## AB 1826 Commercial Organics

California Assembly Bill 1826 (AB 1826) became effective April of 2016, and mandates commercial establishments that generate a minimum of 4 cubic yards of organics per week must arrange for an organics recycling program. Organics include both food scraps and yard trimmings.

The goal of this legislation is to prevent organic materials from ending up in the landfill, when they have a higher use.



# WASTE ZERO SERVICES

Let our Waste Zero Team help your business, multi-family dwelling, or school divert as many materials as possible away from the landfill.

**Recycle more, save more!**

Our talented team of Waste Zero Specialists provides free technical assistance, including on-site waste analysis, staff trainings, and presentations. They will also provide you with a free starter kit of internal containers and signage.

To reach our Waste Zero Team, call **800.243.0291** or email **RSMWasteZero@Recology.com**.

Together we can make a difference!



## WE OFFER:

- ✓ Indoor green & blue containers
- ✓ Posters, labels, magnets, & window clings for free (*custom if needed*)
- ✓ Technical assistance from Waste Zero Specialists
- ✓ Employee trainings & school presentations
- ✓ Educational tables at events



# WE PUT THE 'G' IN 'GROW'

When we are recruiting for new Recologists, we invite people to "Grow With Us". In this case, the word "GROW" is actually an acronym. The "G" stands for Giving back to our communities and our environment by volunteering time and resources. We aren't just another utility

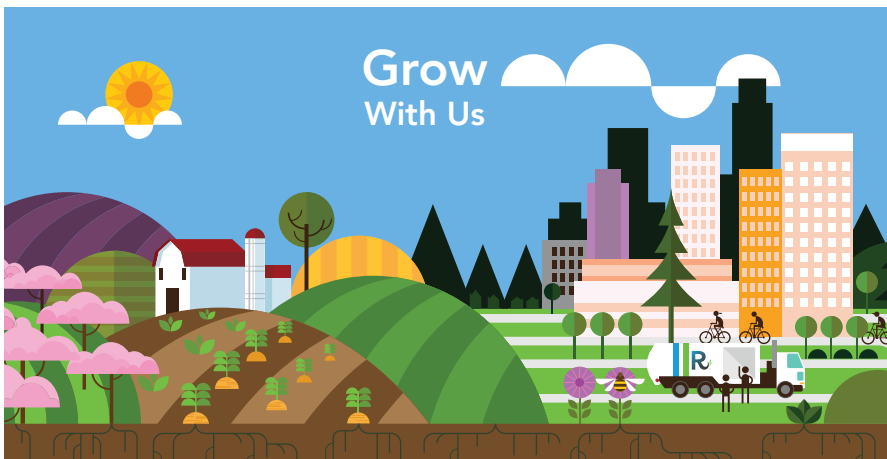
service. We are excited to be part of this community!

In the wake of the devastating North Bay Wildfires, employees from Recology locations all over the Bay Area wanted to do something to help. In December, 222 of us descended on Howarth

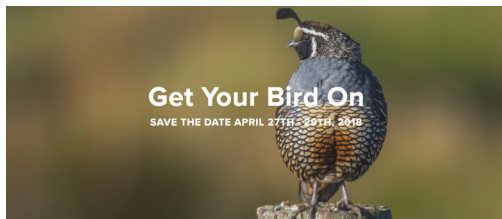
Park in Santa Rosa to restore and re-beautify the popular park. We planted 40 trees and 50 plants. We spread 160 cubic yards of Recology mulch and removed 20 cubic yards of weeds, leaves, and tree branches. It was an honor to get our hands dirty and help the community we would soon be servicing.

Now that we're in operation, we can't wait to do more. We will be donating our time and resources to local non-profits as well as community events all over Marin County. If there is an event you think we should be a part of, be sure to let us know.

Want to know what the "R-O-W" stand for? Check out Recology.com where you can find that and much more. We look forward to being a big part of what makes Marin County so special.



## EVENTS



Late June - November

### 23rd ANNUAL WEST MARIN

### FREE STUFF EXCHANGE

#### Schedule

10am-2pm drop off and collection

2pm-4pm NO drop-off collection only

#### ITEMS ACCEPTED

Bikes/ Sports Equipment  
Bedding / Crafts / Holiday  
Books / Music / Games  
Office Equipment  
Kitchen / Housewares  
Small Appliances  
Garden Tools  
Furniture  
Building Materials  
Clothes / Shoes  
Childrens Toys  
Electronics  
Car Tires

#### ITEMS NOT ACCEPTED

Large Appliances , Mattresses,  
Overstuffed Furniture, Toxics  
Curbside Recycling, Bad Attitudes  
PLEASE NO EARLYBIRDS OR GARBAGE



VOLUNTEERS NEEDED  
PLEASE CALL 415 446 8587  
or EMAIL  
hope.madeline@gmail.com

SPONSORED BY : COUNTY OF MARIN, RECOLOGY SONOMA MARIN, TOMALES BAY ASSOCIATION  
ZERO WASTE MARIN, CONSERVATION CORPS NORTH BAY.