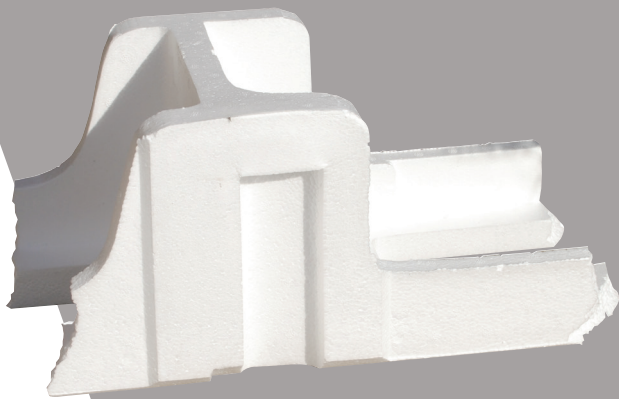


填埋區

LANDFILL

BASURERO



拒絕廚餘食物
拒絕紙製品

**NO FOOD SCRAPS
NO PAPER**

NO SE ACEPTAN RESTOS DE COMIDA
NO SE ACEPTA PAPEL



拒絕可回收物品

**NO RECYCLABLE
MATERIAL**

NO SE ACEPTA MATERIAL RECICLABLE



拒絕危險物品

**NO HAZARDOUS
MATERIAL**

NO SE ACEPTAN MATERIALES PELIGROSOS



SF Environment

Our home. Our city. Our planet.

A Department of the City and County of San Francisco



customerservice@recologysf.com

(415) 330-1300



LANDFILL

The following items go in your black landfill bin because currently there are no recycling options in San Francisco:

- Empty toothpaste tubes
- Broken ceramic dishware and glassware
- Diapers
- Menstrual/sanitary products
- Glass (window and dishware glass)
- Mirrors (if not in condition to be reused)
- Kitty litter and animal feces (bagged)
- Light bulbs: incandescent only. No mercury-containing bulbs, i.e., fluorescent and HID (call Recology for disposal information (415) 330-1405)
- Plastic items mixed with metal, fabric, or rubber
- Products labeled “biodegradable” (these cannot be composted or recycled in SF)
- Plywood, pressboard, and painted, stained or treated wood
- Rubber or latex gloves or rubber bands
- Disposable ice packs
- Polystyrene foam

These items may be put in your black landfill bin, but you can find recycling options for them:

- Wire hangers: take back to a garment cleaner for reuse
- Shoes, belts and accessories: find a donation center near you
- Polystyrene foam: blocks can be dropped off at SF Transfer Station

拒絕廚餘食物
拒絕紙製品
**NO FOOD SCRAPS
NO PAPER**
NO SE ACEPTA COMIDA
NO SE ACEPTA PAPEL



拒絕可回收物品
**NO RECYCLABLE
MATERIAL**
NO SE ACEPTA MATERIAL
RECICLABLE



拒絕危險物品
**NO HAZARDOUS
MATERIAL**
NO SE ACEPTAN MATERIALES
PELIGROSOS



For more information contact customerservice@recologysf.com or call (415) 330-1300