

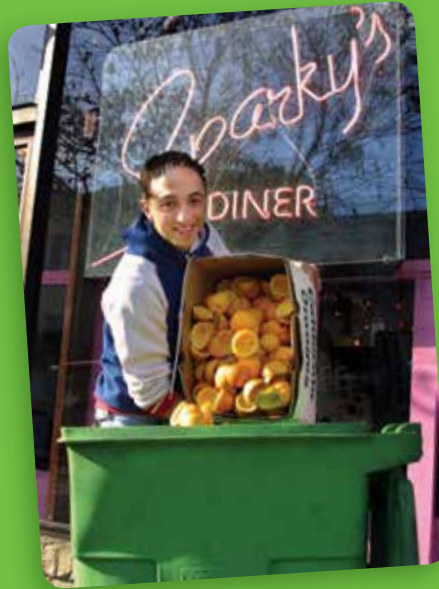
ASSEMBLY BILL 1826 - ORGANIC WASTE

Organic Waste is defined as food waste, green waste, landscape and pruning waste, non-hazardous wood waste and food-soiled paper waste that is mixed with food waste.

REQUIREMENTS OF AB1826

- January 1, 2016: Local jurisdictions are required to have a formal plan for an organic waste recycling program in place.
- April 1, 2016: Businesses generating 8 cubic yards of organic waste per week must arrange for organic waste recycling services.
- January 1, 2017: Businesses that generate 4 cubic yards of organic waste per week must arrange for organic waste recycling services.
- Summer/Fall 2021: If CalRecycle determines that the statewide disposal of organic waste in 2020 has not been reduced by 50% (when compared to 2014), the organic recycling requirements on businesses will expand to cover businesses that generate 2 cubic yards or more of commercial solid waste per week.

MORE INFORMATION ABOUT ORGANIC WASTE RECYCLING REQUIREMENTS CAN BE FOUND AT WWW.CALRECYCLE.CA.GOV



For more information or questions, please visit:
recologybuttecolusa.com

or call:
530.473.3282 Colusa County
530.533.5868 Butte County
530.342.4444 Chico

or come visit us at:
2720 S. 5th Avenue, Oroville, CA 95965

FOOD SCRAP PROGRAM



Recology
Butte Colusa Counties
WASTE ZERO

RecologyButteColusa.com



To advance our goal towards Waste Zero, Recology Butte Colusa Counties has started a food scrap recycling route... the first of its kind for our service area! We are now offering the ability to recycle pre and post consumer food waste.

Food Scrap routes run three times each week. Pricing is based on size, number of containers and how often containers are emptied.

CONTAINERS OFFERED

CARTS:

- 96 gallons

BINS:

- 1 cubic yard
- 1.5 cubic yards
- 2 cubic yards
- 3 cubic yards

COMPACTORS:

- Range in size
(we are able to service most sizes)



ACCEPTABLE ITEMS ✓

FOOD ONLY

- ✓ Bread, Grains, and Pasta
- ✓ Coffee Grounds & Filters
- ✓ Dairy
- ✓ Eggshells
- ✓ Fruit *(pits and nuts too)*
- ✓ Leftover and Spoiled Food
- ✓ Meat *(including bones)*
- ✓ Paper Tea Bags
- ✓ Seafood *(including shellfish)*
- ✓ Vegetables

UN-ACCEPTABLE ITEMS ✗

- ✗ Aluminum Foil and Trays
- ✗ Clothing and Linens
- ✗ Cooking Oil
- ✗ Corks, Twist Ties & Styrofoam
- ✗ Dirt, Rock or Stone
- ✗ Glass, Metal or Plastic
- ✗ Greasy Pizza Boxes
- ✗ Paper Cups and Plates
- ✗ Napkins, Tissues & Towels
- ✗ Paper Take-Out Boxes & Containers
- ✗ Plastic Bags *(even compostable bags)*
- ✗ Soiled Paper and Cardboard

